



# Rikomagic **MK802 IIS**

**Andriod4.1 Dual-core Mini PC**

**Shenzhen Rikomagic Tech Corp.,Ltd**

Table of Contents

Declaration.....	2
1.Connector.....	3
2. Device connection Instruction.....	4
3. Boot state.....	4
4. Main Screen Introduction.....	6
4.1 Move/Delete desktop icon.....	6
4.2 Function column.....	8
4.3 Status bar.....	9
4.4 Application.....	9
5. Settings.....	10
5.1 WIFI Setting.....	11
5.2 Ethernet Setting.....	11
5.3 Portable host pot.....	11
5.4 Bluetooth.....	11
5.5 PPPOE Setting.....	12
5.6 USB.....	12
5.7 Sound.....	12
5.8 Display.....	13
5.9 Screen.....	13
5.10 Storage.....	13
5.11 Apps.....	13
5.12 Security.....	13
5.13 Language & input.....	14
5.14 Backup & reset.....	14
5.15 Date & time.....	14
5.16 Developer options.....	14
5.17 About device.....	14
6. Browse /Copy Files.....	14
7. Install/Uninstall Apps.....	15
7.1 Online installation.....	15
7.2 Local installation.....	15
7.3 Uninstall Apps.....	16
8. Airplay/DLNA.....	16
9. Multi-screen interaction.....	17
10. Web Browsing.....	18
11. Local audio & video playback.....	19
12. Use soft keyboard.....	20
13. Switch input methods.....	20
14. System recovery/update.....	21
Question & Answer.....	25
Specifications.....	26

## Declaration

- The user manual includes all the information of safe and correct operation instruction. To avoid accident and product damaged, please make sure go through all the content carefully before using the product.
- Please keep the product away from high temperature, humid and dusty environment.
- Do not drop or crash the product.
- Do not cut off the device when it is formatting, or upgrading, otherwise it will cause operation system error.
- Do not dismantle the device. Do not clean it by alcohol, thinner and Benzene.
- We keep the right to upgrade and modify the product.
- Disclaimer: we only take the responsibility to provide the warranty and after service. The users have to take care of their data in the device by themselves. We do not responsible for any data or related lost.
- The product is not water-proof.
- All the pictures in the instruction are just for reference.

## 1.Connector



**Micro-USB Power:** Connect with TV USB port for charge the unit.

**USB 2.0 HOST:** Connect with other USB device.

**USB OTG:** Data transfer with PC, or connect USB device.

**HDMI:** High Definition Multimedia Interface Output

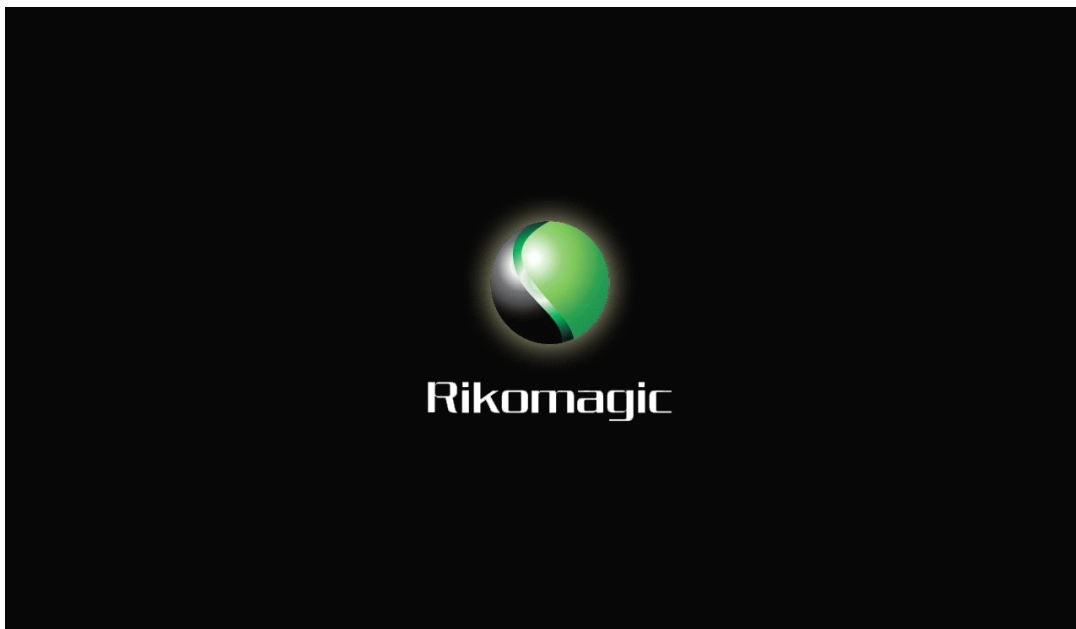
**Micro SD:** Support expanded 2GB-32GB TF card

## 2. Device connection Instruction

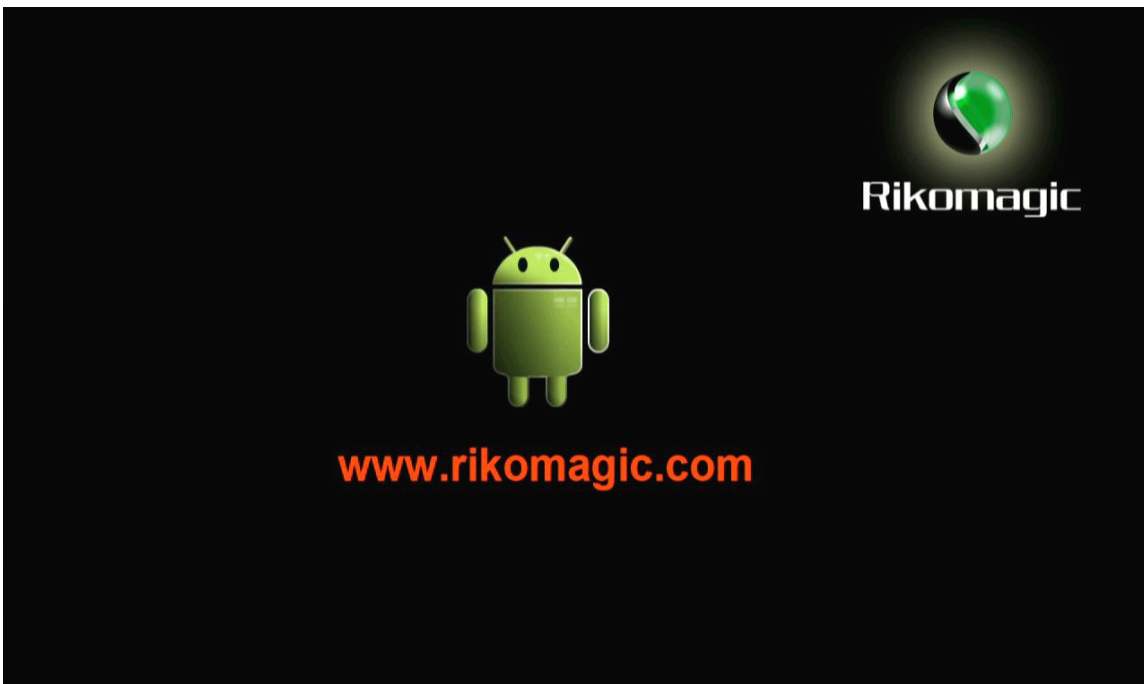
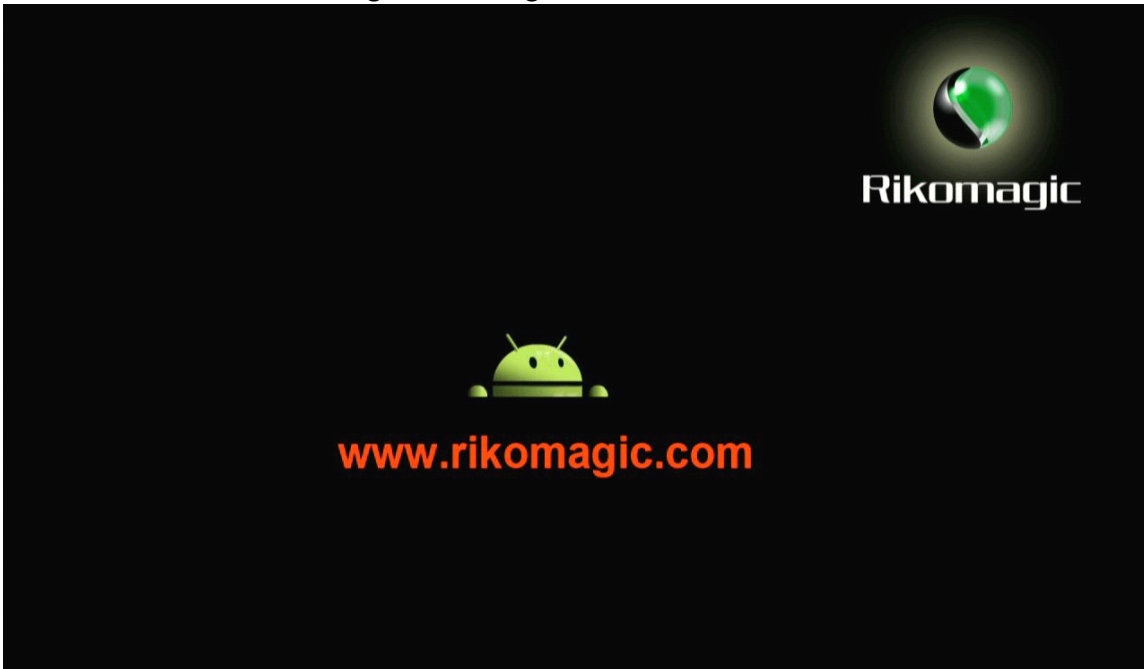
- a) Take out the device insert into your TV HDMI port(if there is no enough space around HDMI interface for MK802IIIS, please use HDMI extend cable), make sure source is HDMI input mode.(Refer to TV set user manual).
- b) Power supply connection: take out Micro USB cable to USB cable, connect the MK802IIIS with TV via this cable; If the TV USB port can't provide enough current, please take USB power supply.(Any USB power supply among 5V/1A to 5V/2A are available).
- c) Suggest using 2.4G wireless keyboard or mouse. Plug 2.4G receiver on USB Host connector, if only mouse plugged, the device will provide soft keyboard during operation; If the device detected the physical keyboard, the soft keyboard will be hidden automatically.
- d) Mouse left button for "ok", right button for "return", rolling for page up and page down, Keep holding left button to drag icon or copy/paste file. Keep holding middle button to pop up properties.

## 3. Boot state

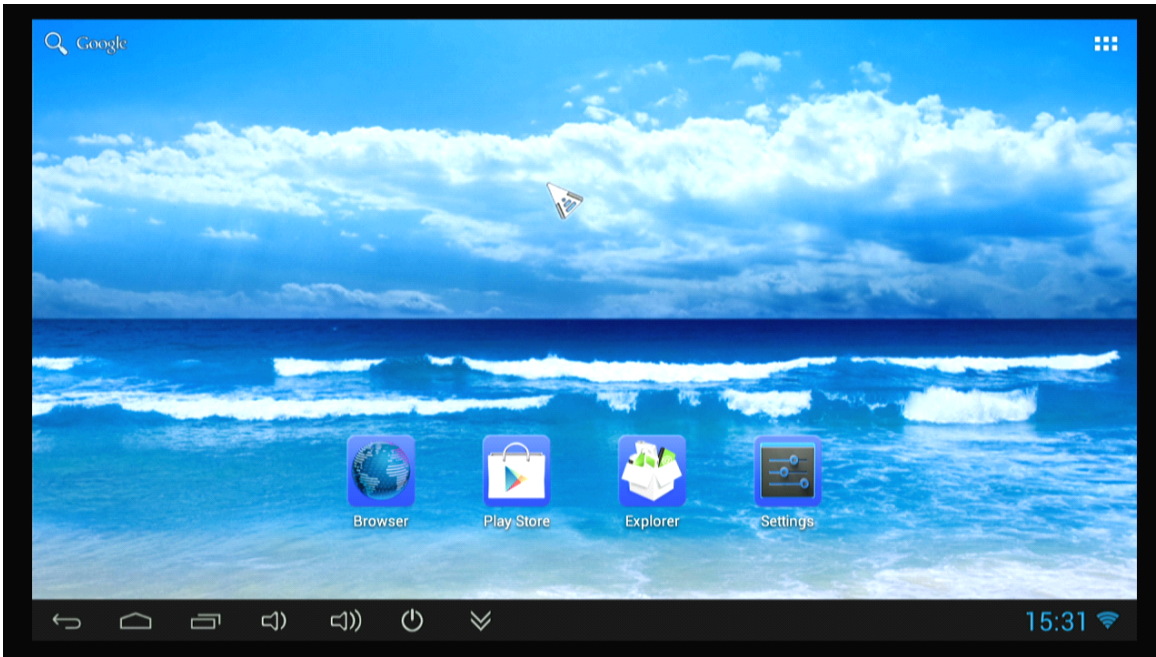
After powered around 10 seconds, the boot screen would appear.



Then access to Rikomagic boot logo;



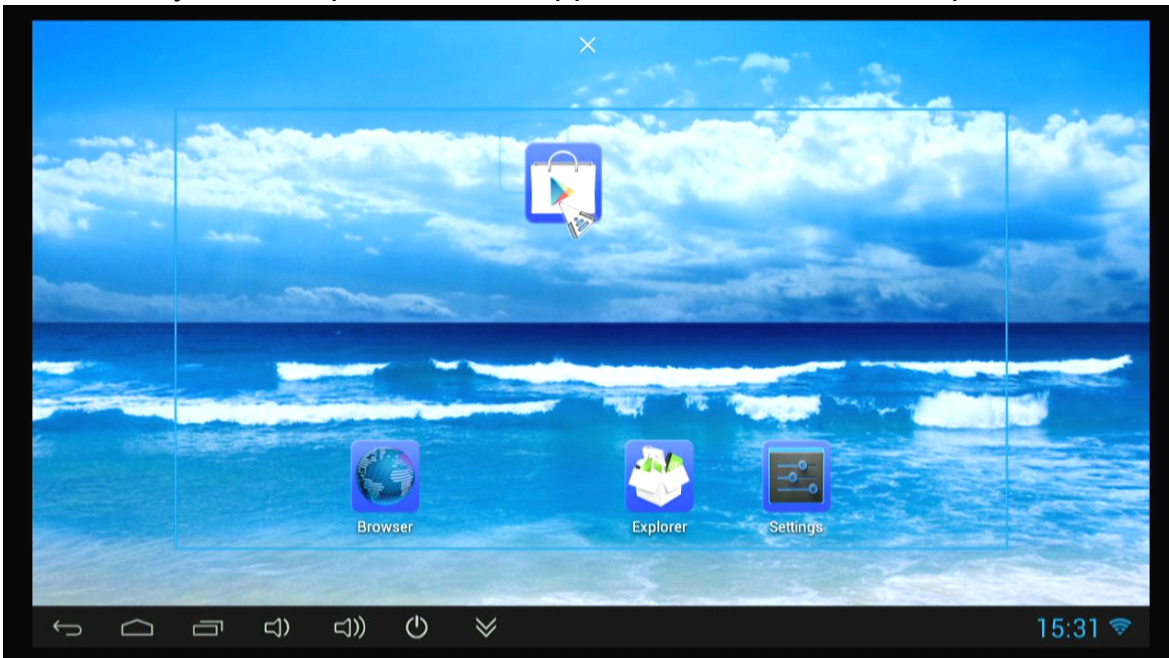
After around 30 seconds, device would access to main screen;



## 4. Main Screen Introduction

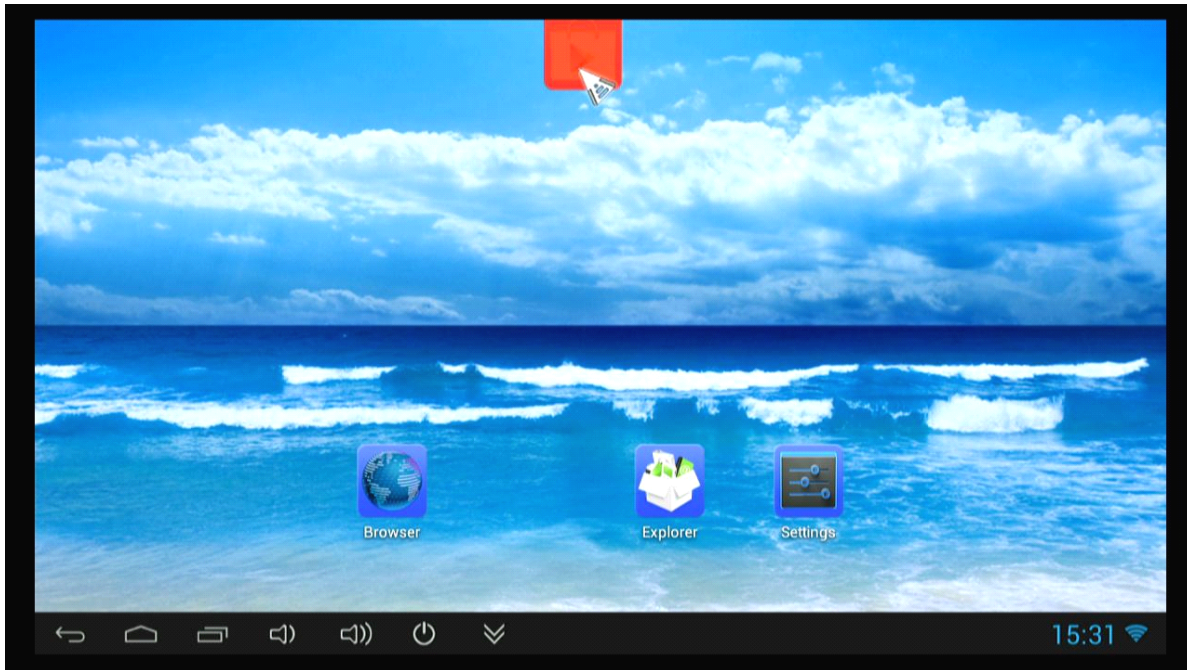
### 4.1 Move/Delete desktop icon

Long-press any icon in the main menu, you could put it in any position as you like, at the same time you could put the other apps shortcut to the desktop.

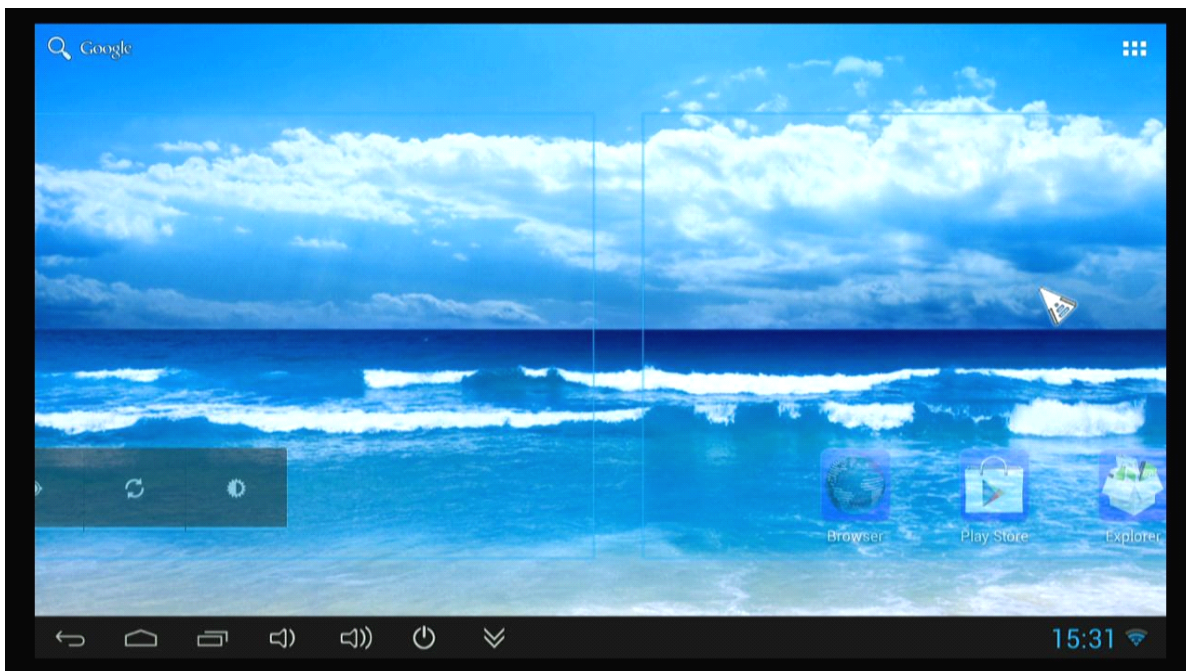


Long press the icon and move it to the right above "x" and loosen, then you could delete it



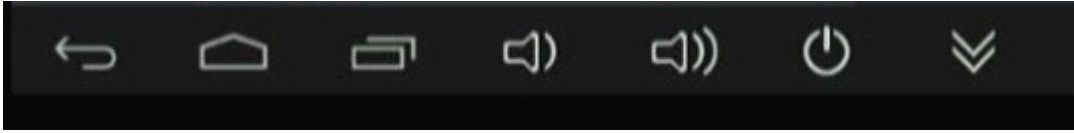


Move your cursor to any space and drag towards left or right for page rolling. Also you can use the mouse wheel for rolling page.





## 4.2 Function column



Return button: click to return to previous directory;



Homepage button: click it anytime to return to main menu;



Program button: Click to check all the running program;



Volume decrease button: Click to decrease volume;



Volume increase button: Click to increase volume;



Properties button: in different apps, it shows different contents. It's equivalent to Windows properties button;



Soft turn off button.



Hide icon: click for hide this function bar.



Search button: Located in the top left corner of the main menu, click this icon to pop up webpage screen, user can input any website here.



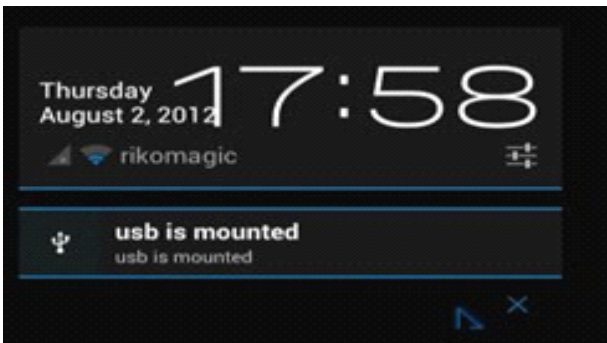
Program tools button: Located in the right top corner of the desktop, click this icon to pop up all the apps which has been installed.

### 4.3 Status bar

Located on the right bottom, display T-Flash Card, USB connection, Time, Wifi and Download status.

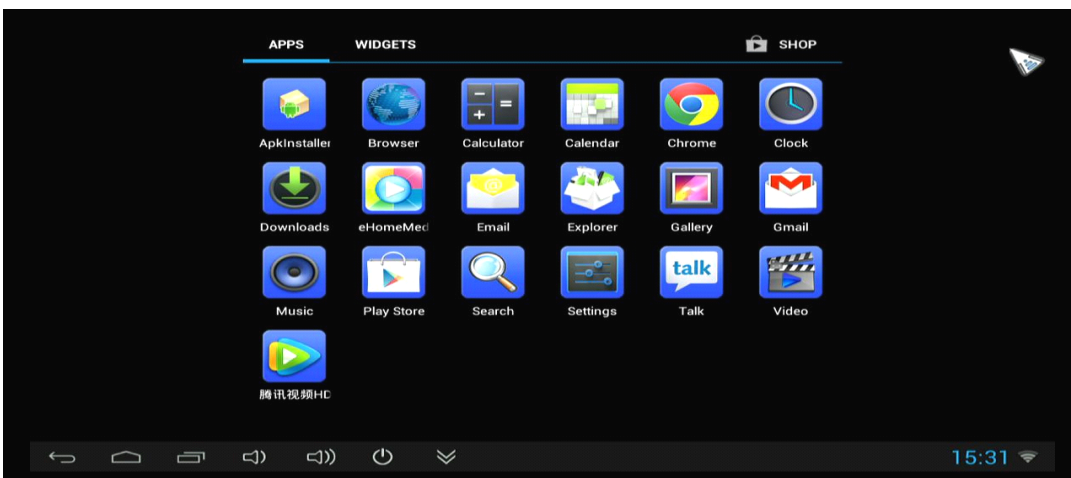


Click status bar, the hide menu will pop up:




### 4.4 Application

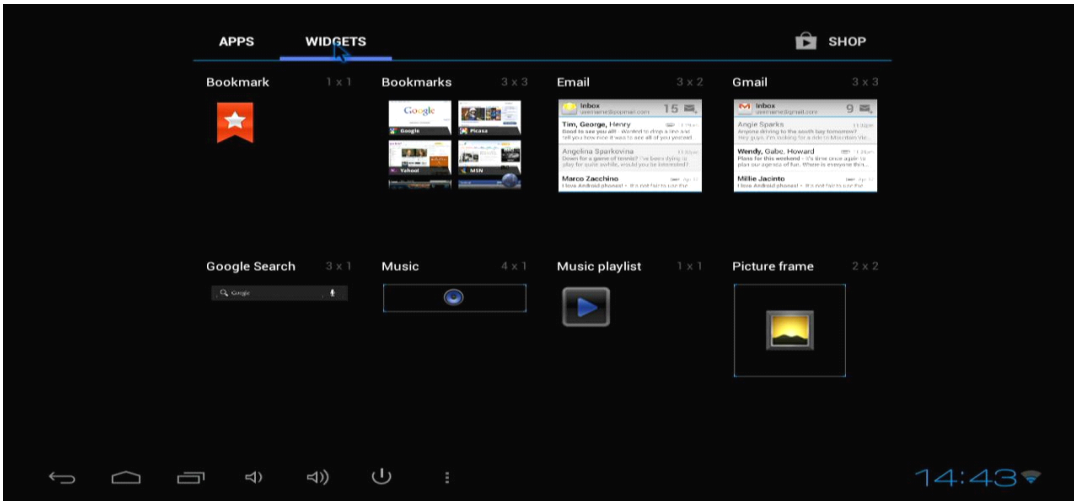
Click  to pop up all the installed app and setup tools icon.



- if the installed APP beyond the first page, drag the page or rolling the mouse roller will display the second page of APP;
- You can directly use these APPs, or set up related tools, or long-press those commonly used APP to drag onto the desktop.

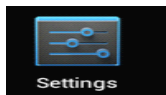


Click  to access widgets, long press any widgets to form corresponding shortcut on the desktop.

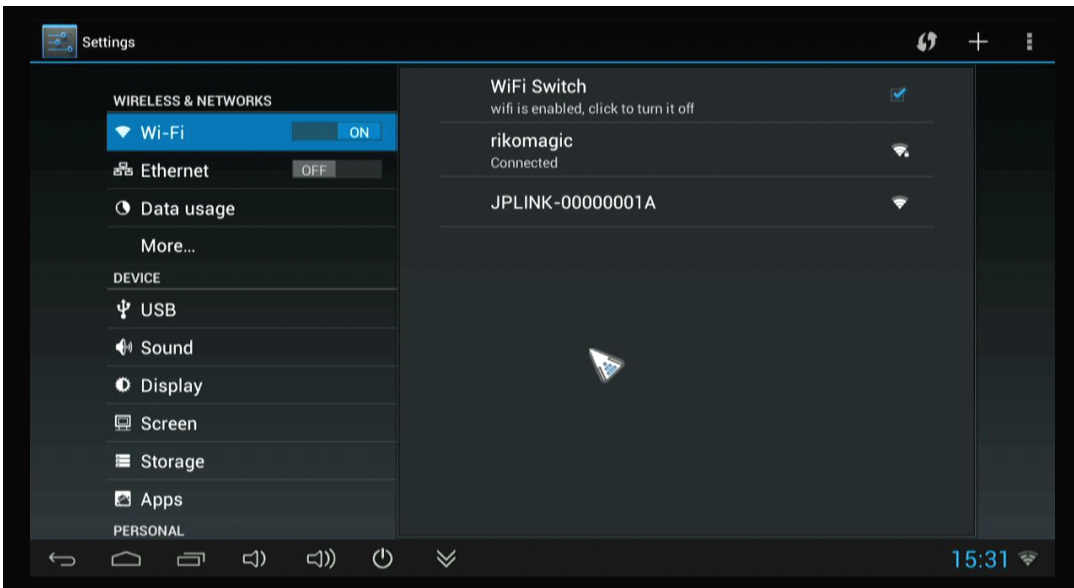


## 5. Settings

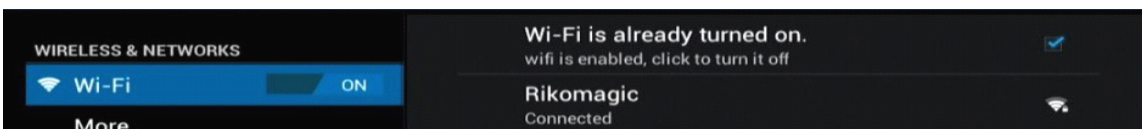
In the system user can setup according to their own requirements, such as network connection, language, input methods, Video output resolution, Sound output and check storage space.



Click the tool bar  to pop up below screen.



### 5.1 WIFI Setting



When opened the WIFI, the MK802 IIS will auto search available wireless router signals within 20 meters, user just choose a router and input correct password to connected network.

## 5.2 Ethernet Setting

If there is no WIFI in the house, suggest to connect a USB LAN adapter (please select right matched USB LAN adapter) to setting Ethernet.

Setting method: Click “setting” → “More” → “Ethernet” → tick “Use Ethernet”, then the Ethernet setting finished.

## 5.3 Portable host pot

If connected the device with Ethernet (not WiFi ), then open portable host pot function, you could regard MK802 IIS as an wireless AP.

## 5.4 Bluetooth (Optional, just available for MK802 IIS-Blue tooth)

Bluetooth is a wireless technology standard for exchanging data over short distances (using short-wavelength radio transmissions in the ISM band from 2400–2480 MHz) from fixed and mobile devices, creating personal area networks (PANs) with high levels of security.

Open Bluetooth settings--> Scan and search equipment-->select a device, input Bluetooth wireless password (if required)-->confirm. Then complete the Bluetooth pairing.

### Notice:

- Some equipment, for example, Bluetooth headset maybe have a fixed password (like 000), then you must input corresponding password.
- Some equipment without testing or without Bluetooth SIG examination and approval, may not compatible with MK802IIS.

## 5.5 PPPOE Setting

If the network need dial-up, then click PPPOE Settings and input account and password. Click “Setting → “More” → “PPPOE Settings” → input account and password.

## 5.6 USB

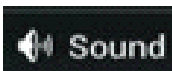


For exchange data between the MK802 IIS and PC.

### Specific operation steps :

1. Equipment connection: take out the Micro USB to USB cable, connect the machine with PC through this cable , at same time, connect the machine with TV through HDMI cable.
2. Settings: After device access to the main screen , click Settings → USB → Connect to PC, press confirm. After the device access to USB mode, turn on USB storage. Now your computer could find the device and you can copy/paste files freely.

## 5.7 Sound



This is for Sound settings;

**Volume:** Control volume level;

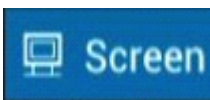
**Operate prompt tone:** Setting prompt tone during operating;

**Screen saver sound:** Setting screen saver sound.

## 5.8 Display

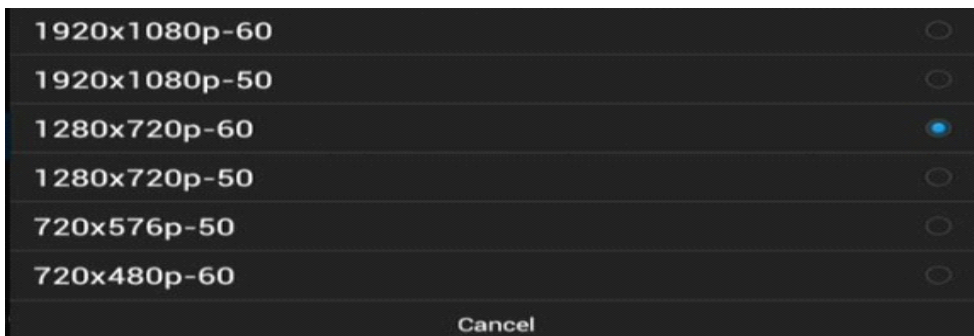
**Font size:** Setting font size according to their own request;

## 5.9 Screen



This is for Screen settings:

1. Screen ratio: Used for adjusting screen ratio.
2. Output Interface: Default HDMI
2. HDMI mode: User can setting corresponding output resolution according to the TV. Normally system will auto detective.



### 5.10 Storage

In this option, user could view local storage space and external storage space, besides, user even can uninstall or format storage equipment.

**Notice:** System divided the whole storage into seven partition, only two partition visible, the other five partition has been occupied by Android system which is invisible.

The balance space is equal to the sum of two partitions.

### 5.11 Apps

In this option, user could view installed and running apps, at same time could check DDR parameters.

### 5.12 Security

User can set password according to their request.

### 5.13 Language & input

1. User can set the language for system menus according to their Country or preference(60 languages supported)
2. System default support Chinese and English, user need manual installing other input methods.
3. User could set keyboard and mouse cursor speed and simulated mouse step length at here.

### 5.14 Backup & reset

**Backup:** If there are some important files or apps inside, you'd better choose backup in case files lost.

**Reset:** If choose this option, and confirm, system will back to factory setting, all the user's settings and apps will missing, (Not suggest);



## 5.15 Date & time

Since there is no battery inside, the date and time setting can't be saved.

Suggest setting to use the network synchronization time, as long as the network connected, then the date and time will be with the network synchronization.

## 5.16 Developer options

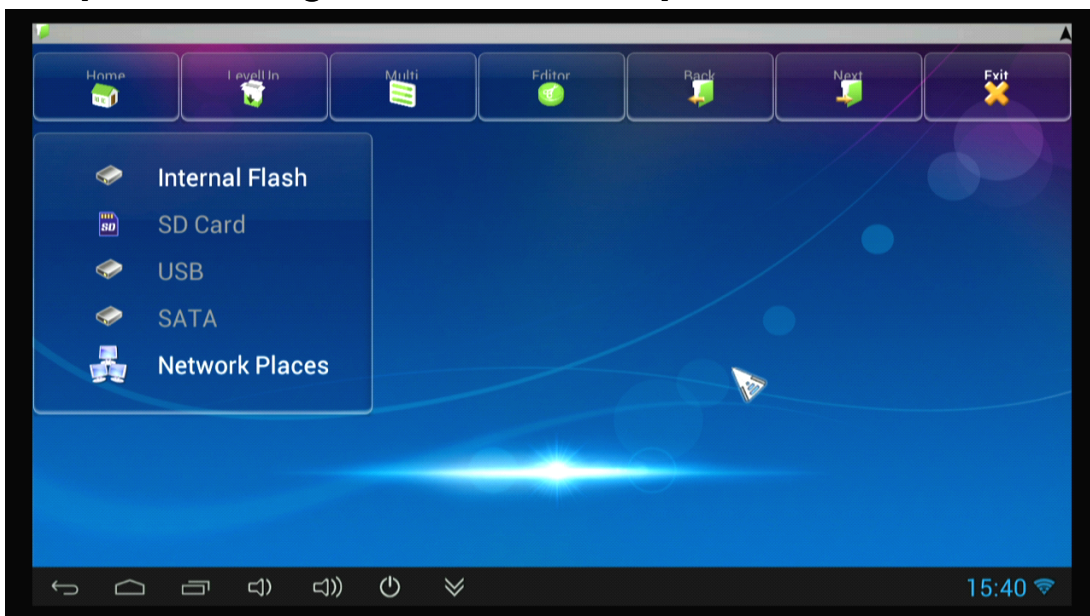
**USB debugging:** During connecting with PC to exchange data, please open this option;

## 5.17 About device

User can check system info here.

## 6. Browse /Copy Files

### 1. Open file management on the desktop.



**Internal Flash:** Check internal storage space

**SD Card:** If TF card inside, icon will be highlight

**USB:** If USB device (HDD, U-disk) connected, the icon will be highlight.

**Network Places:** Through this option, user can access to other PC to find files and playback.

### File Copy

Long-press a file or folder will pop-up a menu, including: Copy, Delete, Move, Paste, Rename options, if no need execute operation, just click “cancel”.

## 7. Install/Uninstall Apps

MK802IIIS support many commonly used third-party apps. You can install or uninstall apps freely, there are two methods available for installing Apps:

### 7.1 Online installation

Please login Google Play store or other Android marketing to download Apps (User should have Gmail account if download from Google play store), After download system will remind you to install the Apps, just click install according to the system prompt.

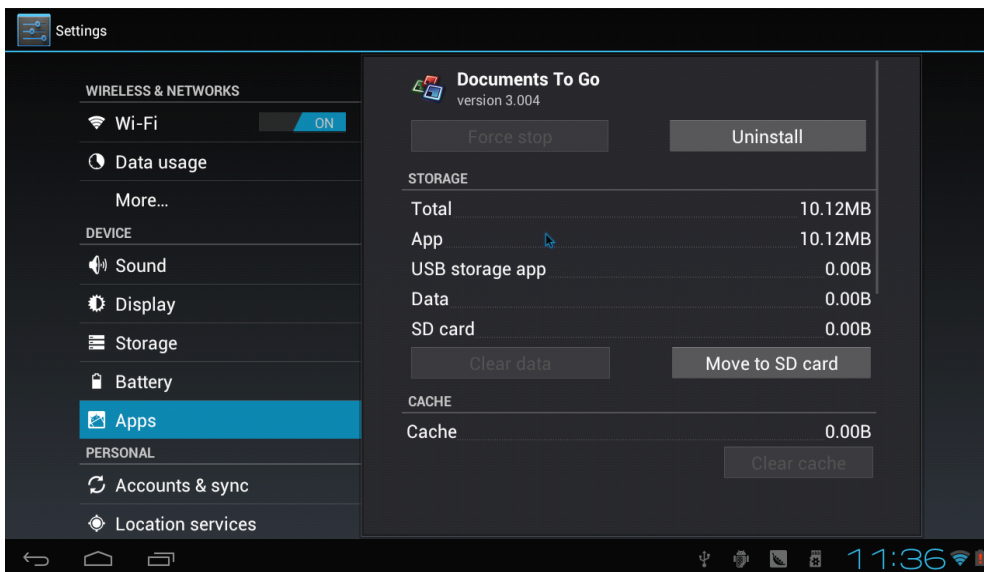
### 7.2 Local installation

User also can copy app from computer to U disk or TF card, insert the U disk or TF card to your device, just click the APK icon to install according to the system prompt.

### 7.3 Uninstall Apps

Click Settings→Apps, click an Apps you want to uninstall, the uninstall window will pop up click uninstall to uninstall.

If you don't want to uninstall just exit.



## 8. DLNA

**DLNA** : Through some special APP(such as iMedia Share Lite.), all the multimedia files can be pushed from smart phone or Android tablet PC to big screen, user can share those pictures/music/videos with family or friends freely.

## 9. Multi-screen interaction

Multi-screen interaction is the most popular technology.

Through this function, user can remote control the item by smart phone or any Android tablet PC.

User can download the special APP (MK802 III) from Google play store and install onto smart phone, the APK will including touch pad which can be used as mouse; virtual keyboard, virtual remote control, return, G-sensor.

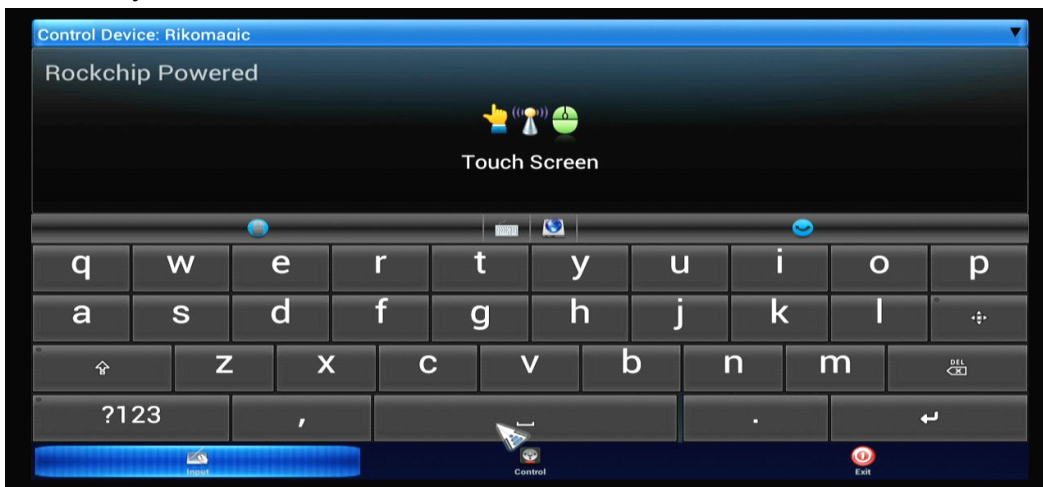
Turn on G-sensor, user can play somatic games by their smart phone freely.

### Software Interface

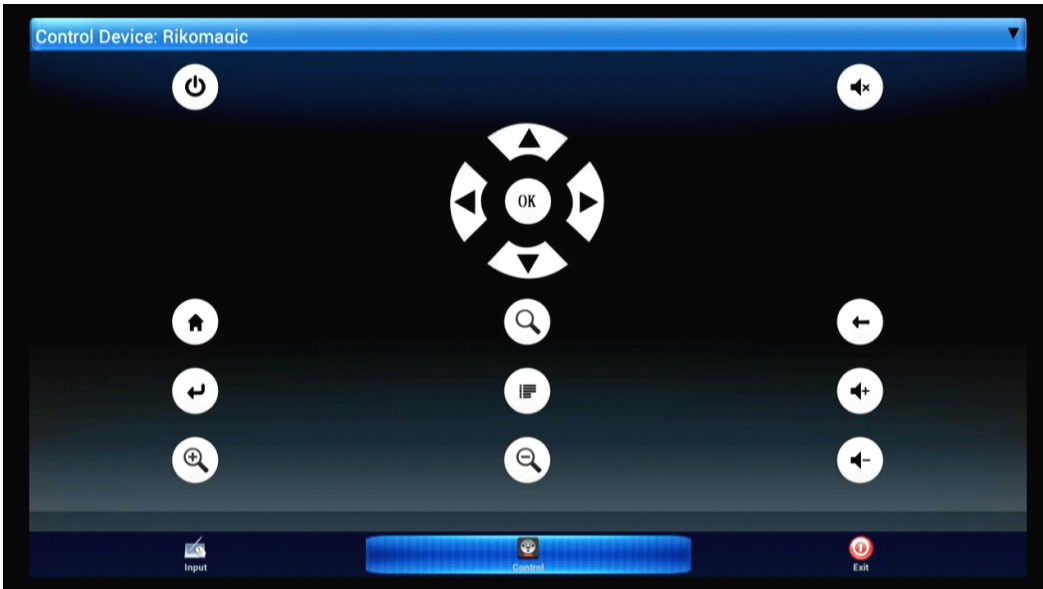
#### Touch Pad



#### Virtual keyboard

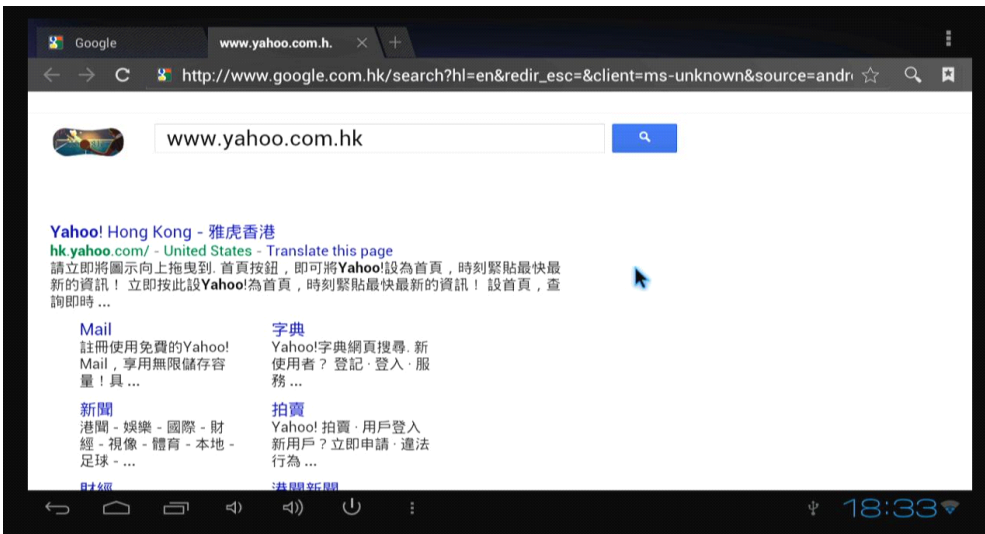


#### Remote control Interface



## 10. Web Browsing

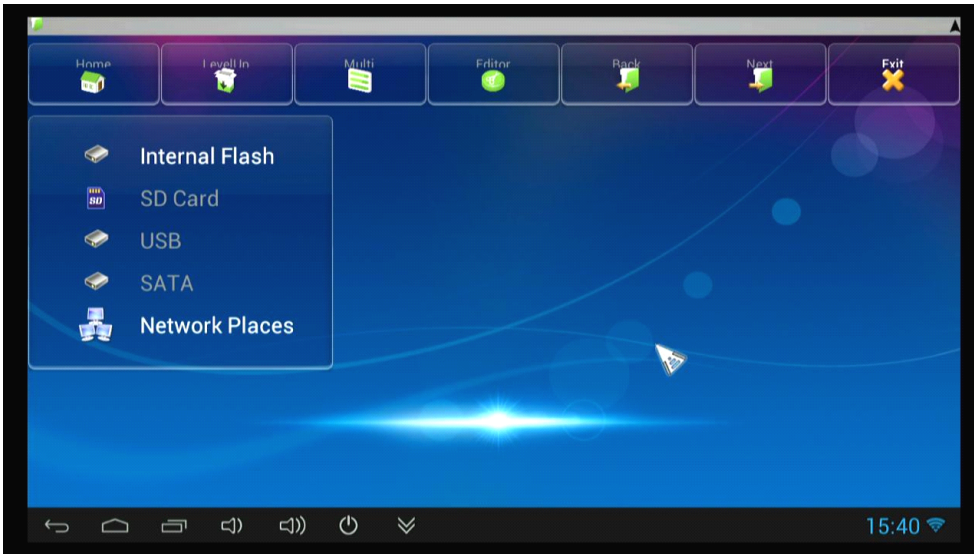
After connected network, you can access the webpage screen through the system browser.



New opened webpage will be shown on the screen as tag, click “+” to add new webpage, click “x” to close the webpage.

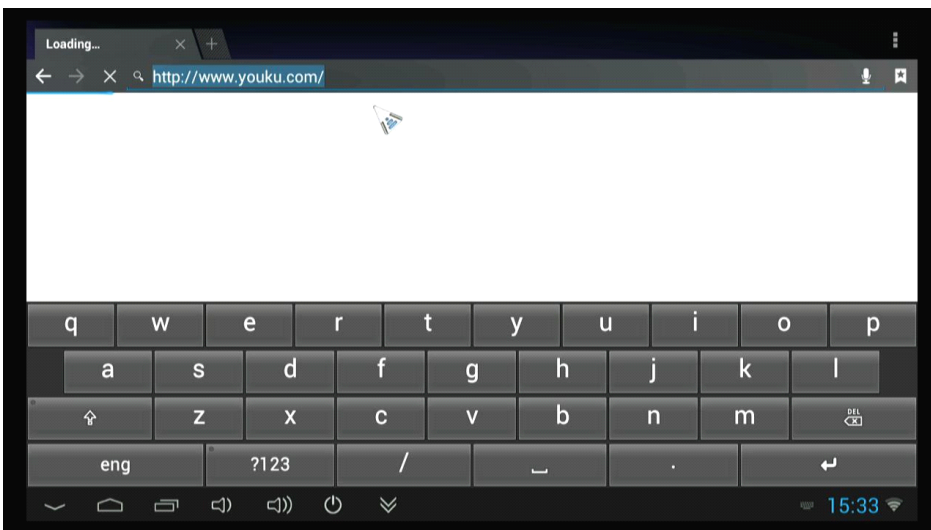
## 11. Local audio & video playback

Through the file manager, user can browse & playback those contents of TF card, USB flash or USB HDD.



## 12. Use virtual keyboard

If just connect USB mouse only, then below virtual keyboard will pop up;  
If connect with physical keyboard, system will hidden the virtual keyboard.



## 13. Switch input methods

Click the keyboard icon at the right-bottom status bar from desktop;



All the installed methods will display as below picture, and you can choose one of you prefer:






## 14. System recovery/update

If your MK802 IIIS has following issues, please solve these issues by recovery/update methods.

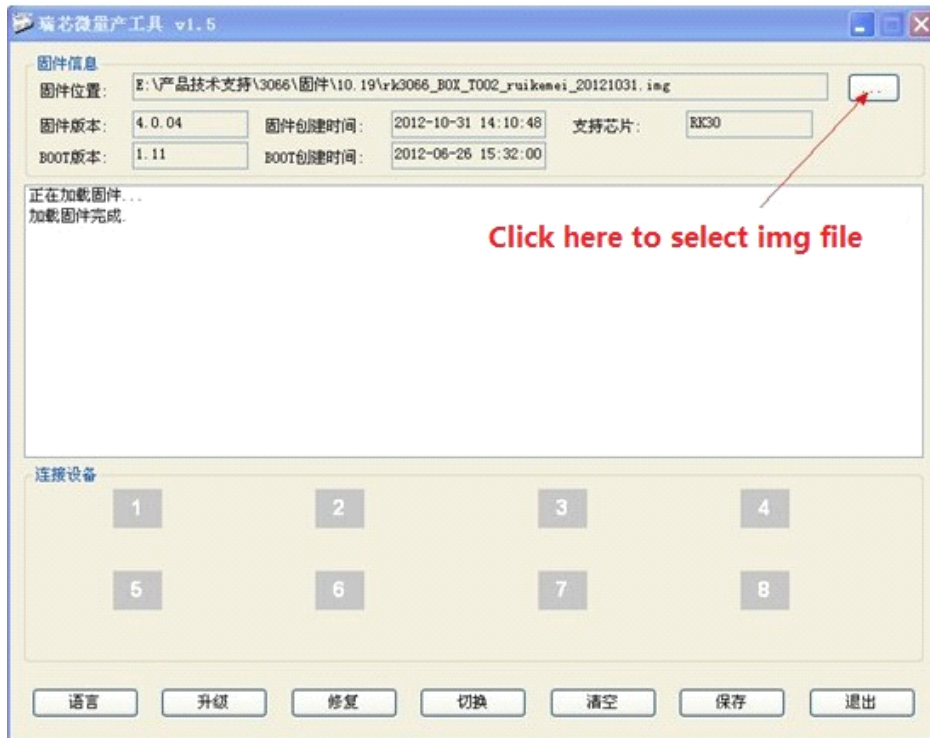
1. If you need update to the latest firmware,
2. After boot, there is no signal;
3. There is only boot screen;
4. System running very slow, crashing;
5. Can't find the wireless network equipment, or can't connect wireless;
6. When installation apps, player loss power unexpected and cant boot up.
7. TF card update failed and can't boot again etc.

Recovery/update steps:

Firstly, download recovery tool  and recovery firmware,(img file) from official website or get from sales.

Download, decompression the folder and find  to double click, below screen will pop out, then add img file.





## Second, connect MK802 IIIS with computer.

Connect the unit with computer through the USB cable first (Micro USB to USB cable), at same time , prepare a thin metal stick, press the recover button by the stick according below method.



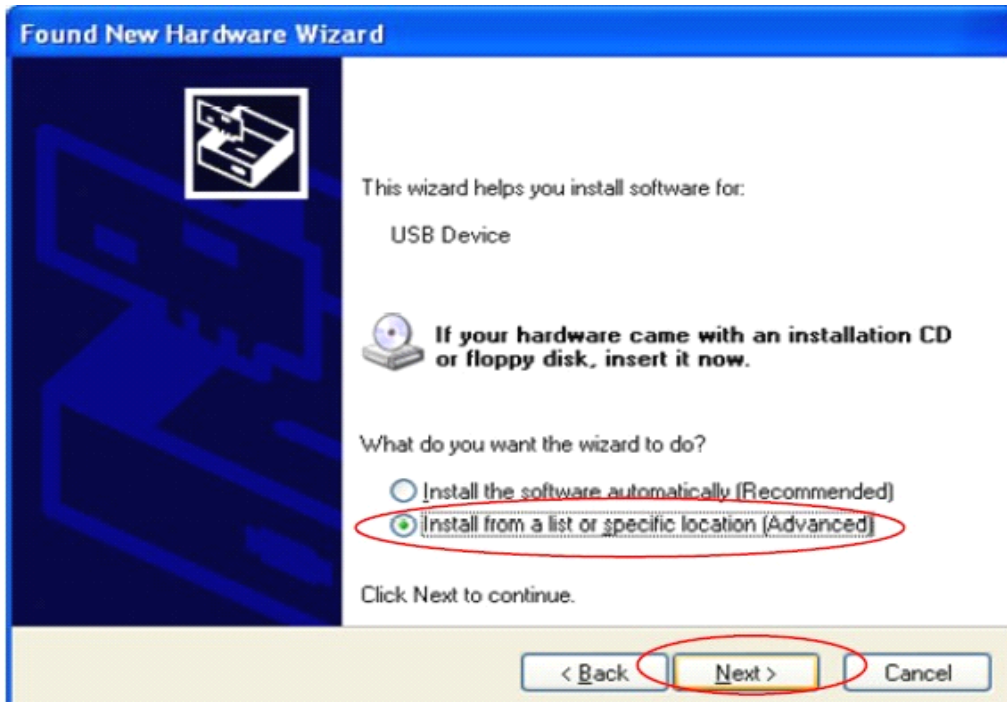


The recovery button is here↵

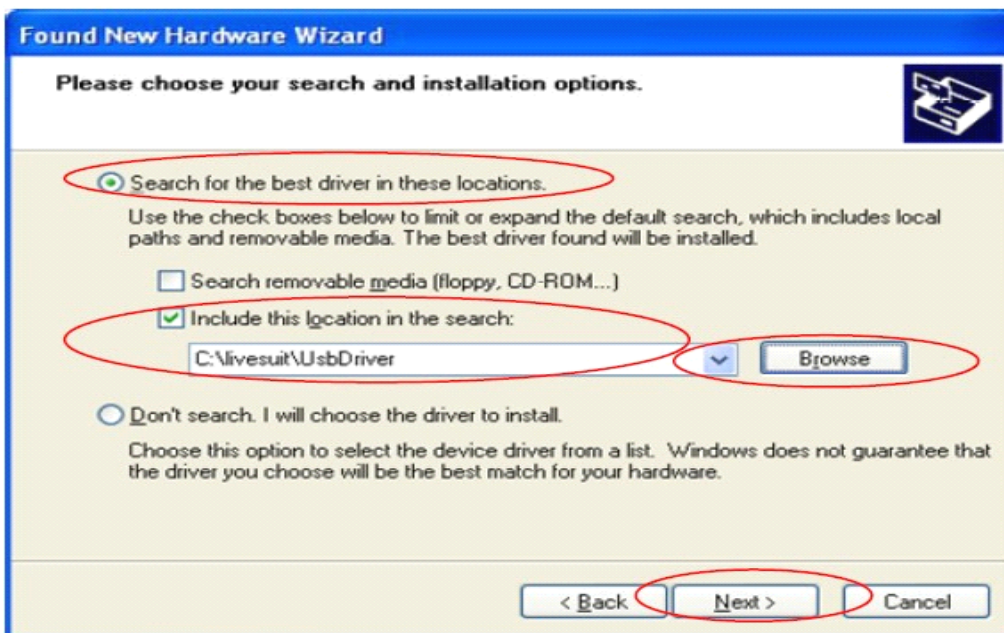
Don't loose the stick, at same time, connect the USB cable with computer through the USB OTG port, after 3-5s, loose the stick.



There will pop up a guide window to install new driver, please install according to below step:



Select "next"



Choose the options as picture display, then click browse, find out then click "next" to install.

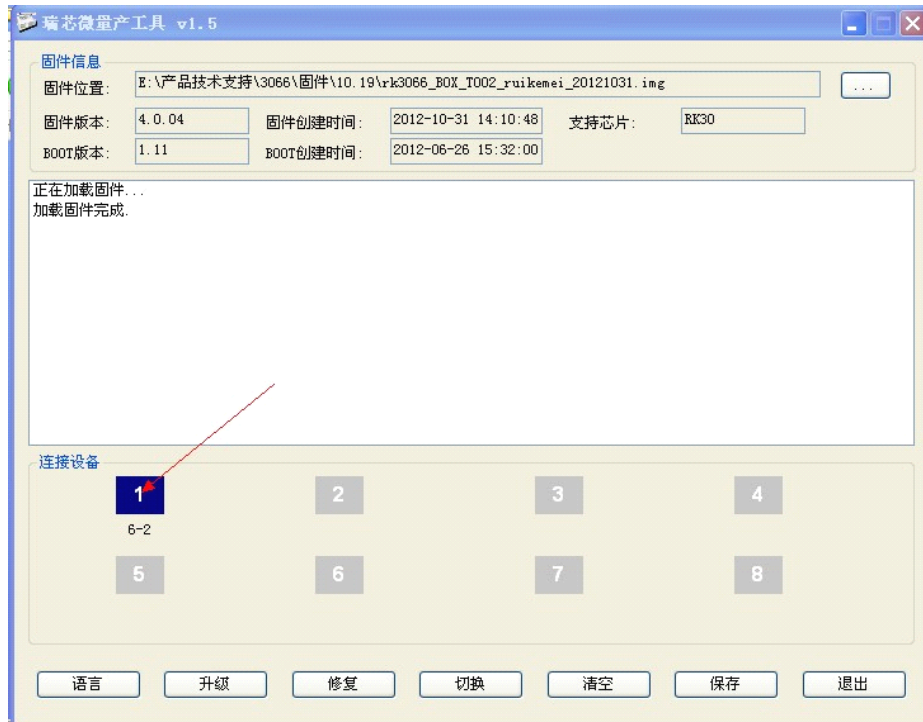


When finished installation, the computer will pop up below window, then click “finish”

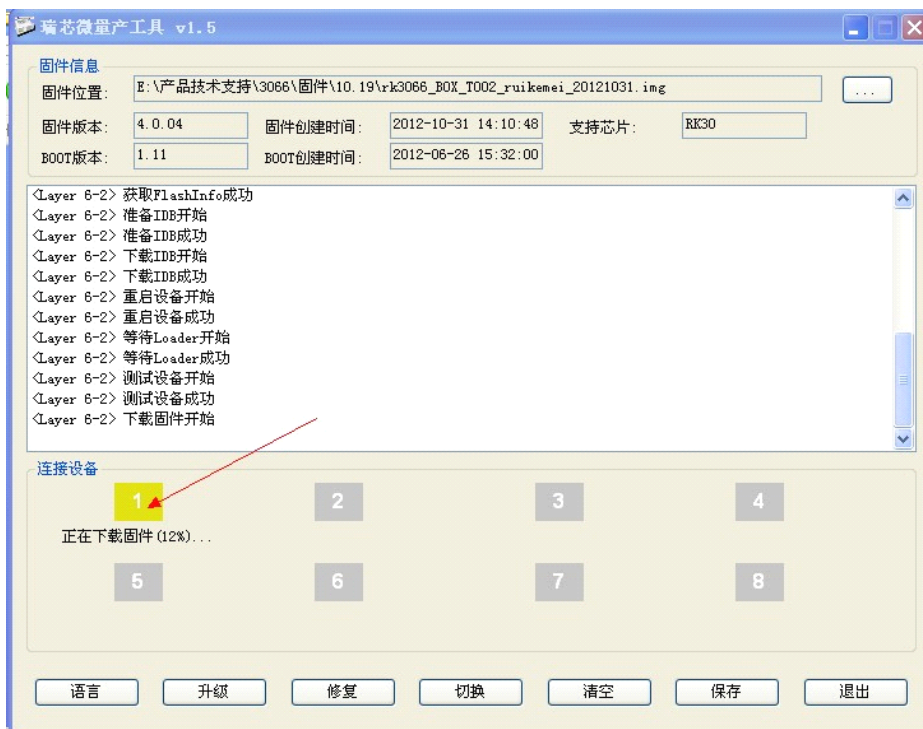


After installation, the “connect device” icon on the “batchtool” will changed to blue, as below:

# Rikomagic MK802 IIIS User Manual



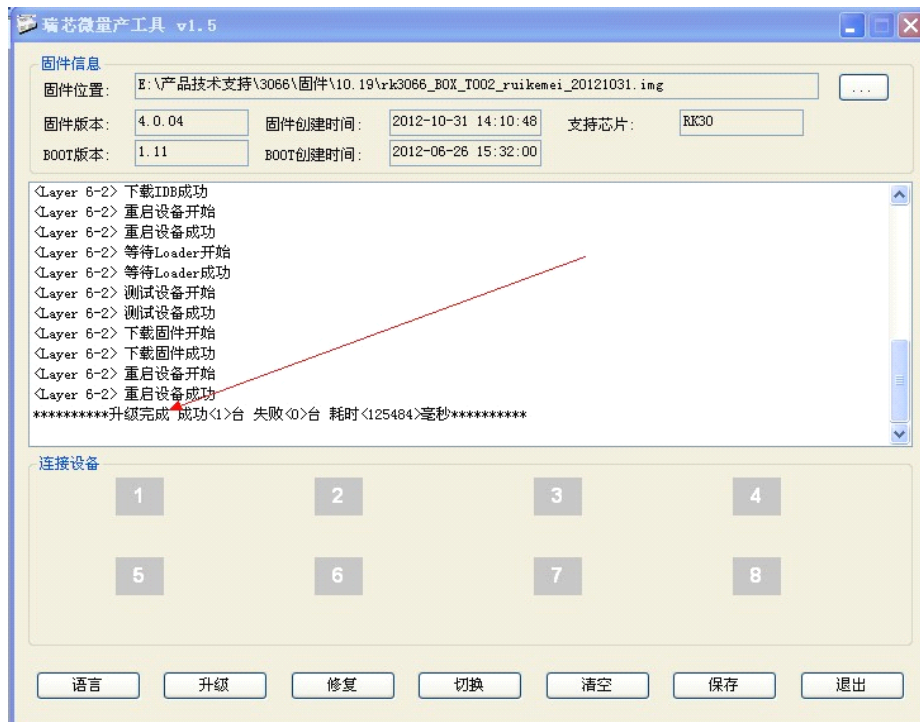
Then Click “update” for recovery, as below .



This procedure will cost 3 minutes also, pls wait patiently, during recovery/upgrade, don't remove the USB cable.

When this prompt window appears, then means recovery is successful, pull out USB cable, then total process is finished.





## Notice:

1. Same computer just need install driver for one time;
2. First turn on the unit after recovery/update will cost more long time, and even occur some lag issue, it's normal since internal apk file need be decompressed and occupy RAM, after 5 minutes, then system running well. So don't worry about that.

## Question & Answer

- Screen flicker or unstable working: please check if the HDMI cable has been connected tightly.
- Cannot start device: please download FW file from Rikomagic official website: [www.rikomagic.com](http://www.rikomagic.com) to refresh the device FW. Make sure all the important data has been backup before process it. If the issue still cannot be solved, please contact the distributor which you bought from.
- Keep restarting system automatically: please check if the device get enough power supply. Sometimes, external HDD cause power shortage. Please plug additional power supply for external HDD or other external devices.
- Cannot find file in SD card or open drive: Please check all the connection of the device. And make sure you have tick of SD and USB Host in "Setting"



## Specifications

Model#	MK802 IIIS
CPU	RK3066 Dual Core
GPU	Quad- Core 2D/ 3D/ OpenGL ES2.0(AMD Z430)/ OpenVG1.1
OS	Android 4.1
Main Frequency	Cortex-A9 , Up to 1.6GHZ
RAM	1G DDR3
Memory	4GB/8GB
Expand Micro SD	T-Flash(Maximum support 32GB)
Browser	Browse webpage
Video Format	WMV/ASF/MP4/3GP/3G2M4V/AVI/MJPEG/RV10/DivX/VC-1/MPEG-2/ MPEG-4/H.263/H.264/1280*720P HD 30 fps, 1080P/720*480 D1 30fps
Audio Format	MP3/WMA/APE/FLAC/AAC/OGG/AC3/WAV
Music	Can be connected to the Internet, listen to music online
Picture format	Max.8000x8000 JPEG BMP GIF PNG
WiFi	802.11 b/g/n
Bluetooth	Suit for V1.0 to V3.0(optional)
Flash	Supports flash 11.1
Ports	HDMI(male),Micro SD slot, USB host x2, USB power port; LED(Blue)
Accessory	HDMI cable, USB power cable, manual, MircoUSB to USB(female) adapter; USB power adapter(optional),
Unit Size (mm)	90mm*40mm*13mm

ADD: 2F,Liangshi Building,Qi'an Road 6#,Shajing street, Bao'an,Shenzhen, China, 518125

Tel: 86-755-29981801

Fax: 86-755-27317052

Sales E-mail: sales@rikomagic.com

After service E-mail: service@rikomagic.com

Official website: www.rikomagic.com