

Add-On Board

CuTOUCH 24VDC input/output add-on board

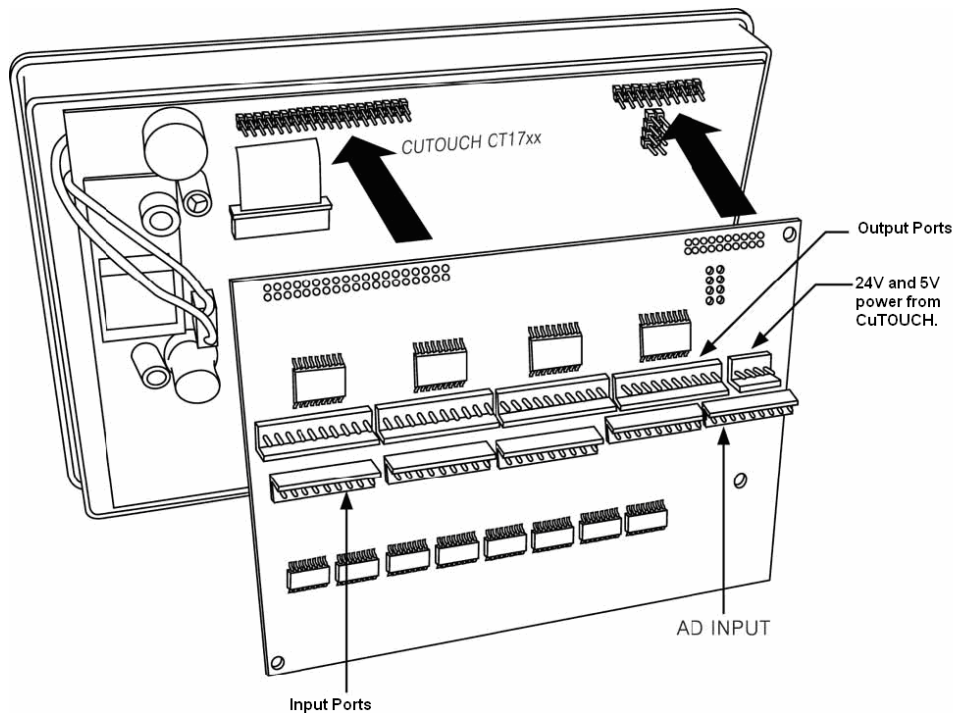
A. Introduction

1. Power for the ADD-ON Board powers on as soon as J2 and J4 are attached to CuTOUCH. It requires no additional power. When using power from the CuTOUCH, you can use a 4-pin connector which is made up of GND, 24V, GND, 5V.
2. Input Voltage :24V±10%/2A (MAX 2.0A)
3. Operating Temperature :-10°C~50°C

Input Ports: P56 ~ P87: 32

Output Ports: P24 ~ P55: 32

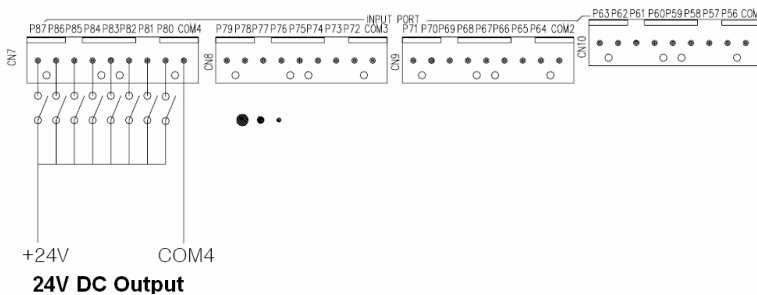
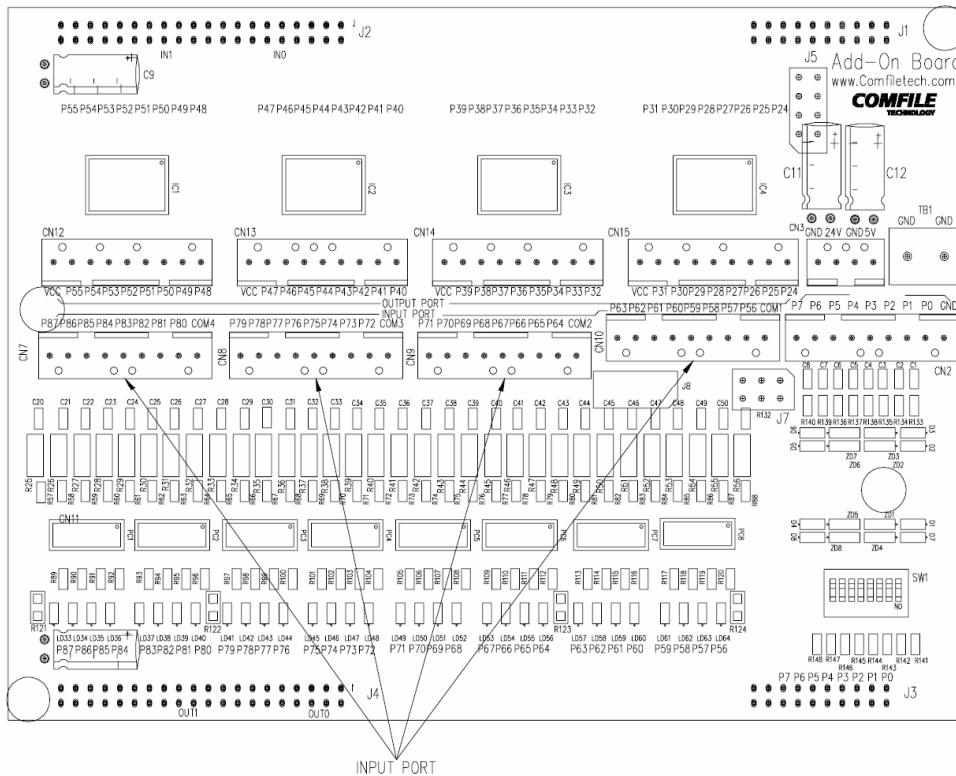
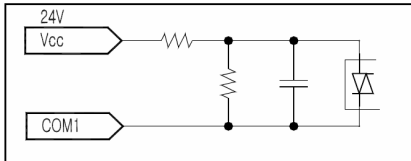
A/D Inputs: P0 ~ P7: 8



B. Input Port Test

Input Ports: P56 to P87: 32

Input Ports are Bi-directional ports. They are labeled COM1, COM2, COM3, and COM4, each With 8 I/O ports. You can use TB1 to connect to ground (GND). For NPN TR, you may also use PNP TR.



B. Output Port Test

As seen in the below picture, 24VDC output voltage can be connected to other devices such as relays.

Warning: ULN2803A is Open Collector, please use a Pull-Up resistor (4.7K) when testing.

Please be careful not to directly input voltage to the ULN2803A as it could cause damage to the chip.

Since relays and SSRs have internal resistors, you can connect them as shown below.

If you are using our Plug-N-Play Relay8 or SSR8 Boards, you can Plug-N-Play your boards using the orange connectors.

