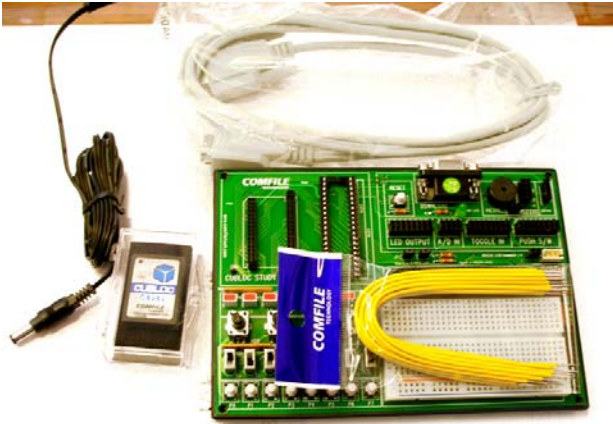
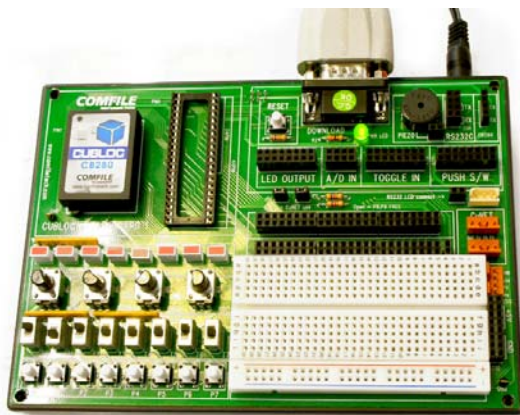


# Quick Start Guide

Let's get up and running!



1) You should have received a module, study board, DC Jack, Yellow Jumper wires, serial cable, and a manual with your start kit.

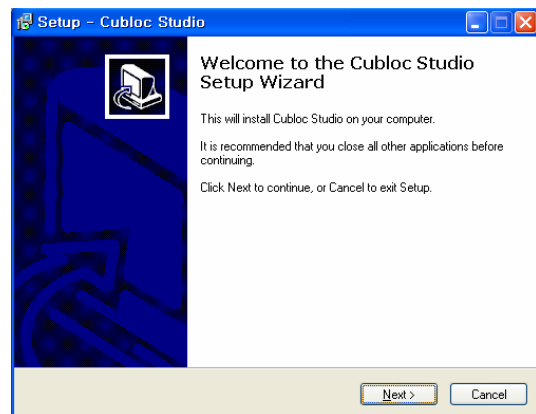


2) Simply put the CB280 into the DIP socket like shown in above picture. Connect the serial cable to the TOP serial port of the study board. You can connect 9-12V to the + and - of the DC Jack. The polarity does not matter for the study board, so simply hook + to one of the lines and - to the other. If you bought our 12V DC Adaptor, you can simply plug that in.

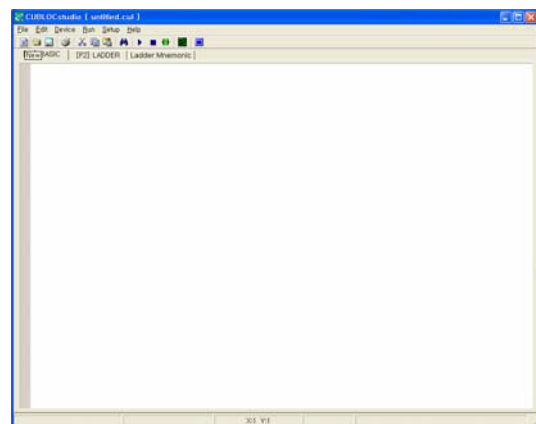
3) Load your CD into your PC and you will see the following screen:



4) Select "Install CUBLOC Studio"



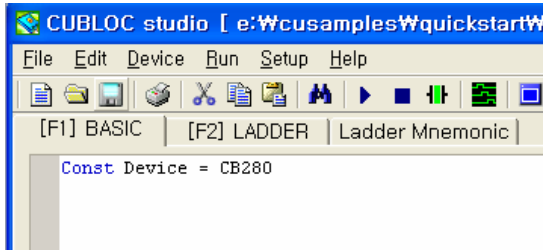
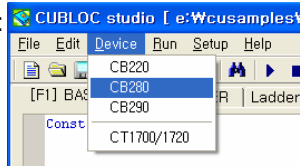
5) Follow the instructions and launch the CublocStudio program.



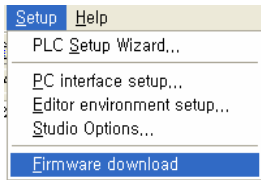
6) Once you see the above screen, click on new file button



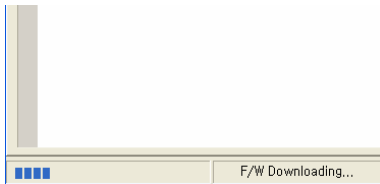
7) Select the device like this:



8) You should see Const Device=CB280 like above.




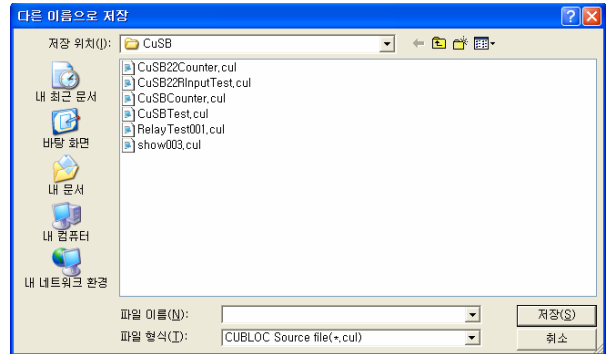
9) Under setup, choose "Firmware download". This will update your CB280 module to the latest firmware. You can always download the newest version of CublocStudio from our Download page on our website, [www.comfiletech.com](http://www.comfiletech.com) and do this in the future too, to upgrade to the latest firmware.



10) You will see a bar on the lower-left hand side incrementing when the firmware is being downloaded. Don't worry if your PC hangs during this time, it is completely normal. The firmware download should take 20 seconds to 2 minutes depending on your PC speed and type of serial cable used. Once it's done, you will see "F/W installed" at the bottom of CublocStudio like below screenshot:

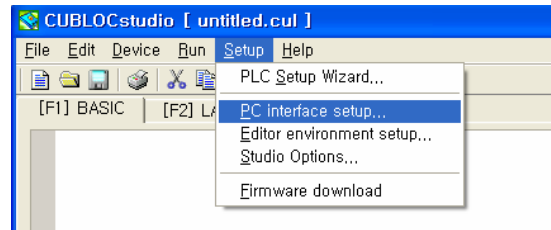


11) Let's try downloading an empty program in to our CB280 module on the study board. Press on the button 

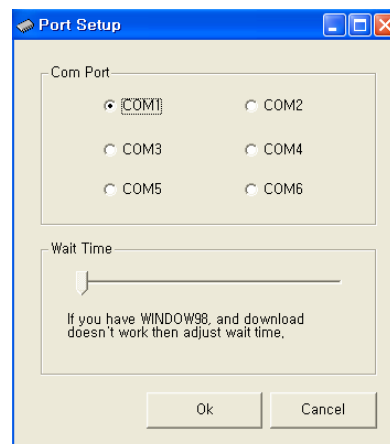



12) You will see a file dialog window appear. Simply choose a name for your source file and click on Save.

13) Your program will download automatically now. Congratulations! You have successfully downloaded a program. If you got any errors, please double-check your serial-cable is connected correctly and the Com Port is set to the correct port.



14) You can check your Com Port setting by going to Setup > PC Interface setup like above screenshot.

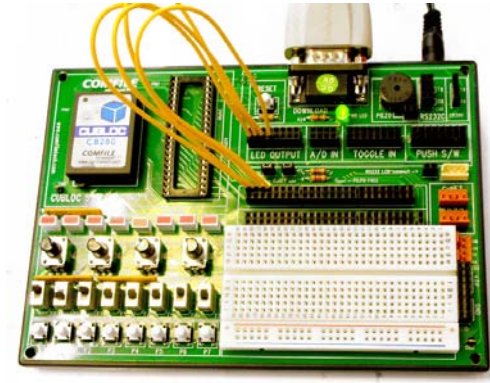


15) Just make sure you have the correct port number and you can try pressing the run button again 

16) Let's make a simple program and make the LEDs flash. Connect Jumper Wires like shown in the below picture:

(You are connecting 0 to 3 on the black holes to L0 to L3 on the LED OUTPUT.)

(Here, 0 to 3 on the black holes mean P0 to P3 on the CB280 I/O Specs)




20) Congratulations, you've made your first CUBLOC program! All the peripherals on the study board can be connected to I/O pins of the CB280 using the Jumper wires just like connecting the LEDs.

21) Happy cubing!

17) Now you are ready to make a simple program since the LEDs are connected to P0, P1, P2, and P3 I/ ports.

```
Const Device = CB280
Do
  Out 0,1
  Out 1,1
  Out 2,1
  Out 3,1
  Delay 100
  Out 0,0
  Out 1,0
  Out 2,0
  Out 3,0 |
  Delay 100
Loop
```

18) Copy the above lines into your program and press on the run button  .

19) You should see the LEDs on the study board flashing like shown in this picture:

