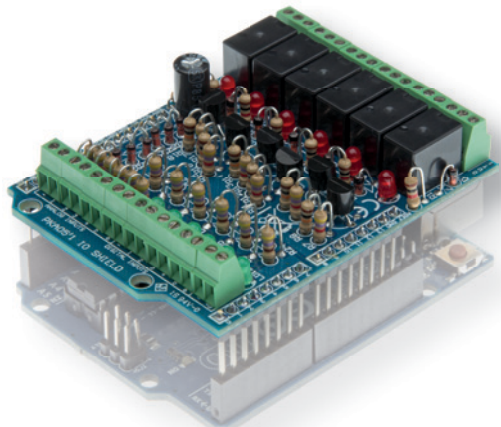


# VMA05

MANUALE UTENTE HVMA05'1

## Shield IN/OUT per Arduino®

velleman®  
MODULES



### Shield INPUT - OUTPUT per Arduino®

#### Caratteristiche

- Compatibile con Arduino Due™, Arduino Uno™, Arduino Mega™
- 6 ingressi Analogici
- 6 ingressi Digitali
- 6 uscite a relé
- LED d'indicazione per uscite a relé e ingressi digitali

#### Specifiche

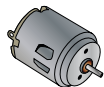
- Ingressi Analogici: 0..+5VDC
- Ingressi Digitali: compatibili con uscite open collector o a contatti puliti
- Relé: 12V
- Contatti relé: NO / NC 24VDC / 1A max.
- Dimensioni: 68 x 53mm / 2,67 x 2,08"



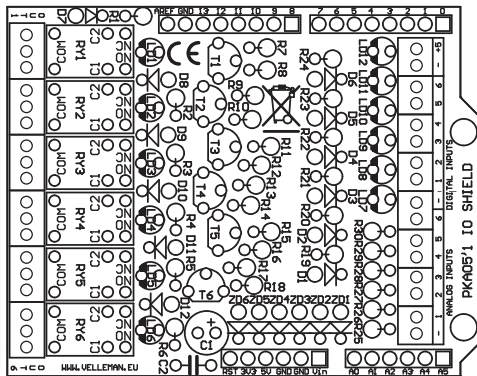


Partecipa al nostro forum Velleman Projects

**1 USCITA  
A RELÉ**  
MAX. 24VDC / 1A



6 USCITE A RELÉ  
(MAX. 24VDC / 1A)



**2 INGRESSI DIGITALI**

6 INGRESSI DIGITALI



101011101011001...

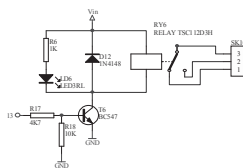
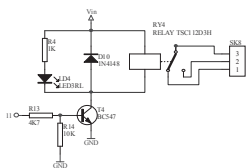
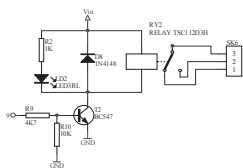
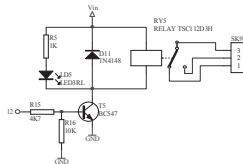
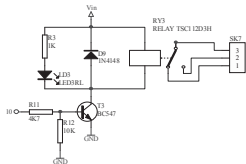
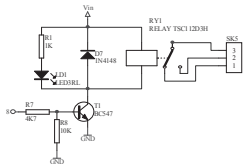
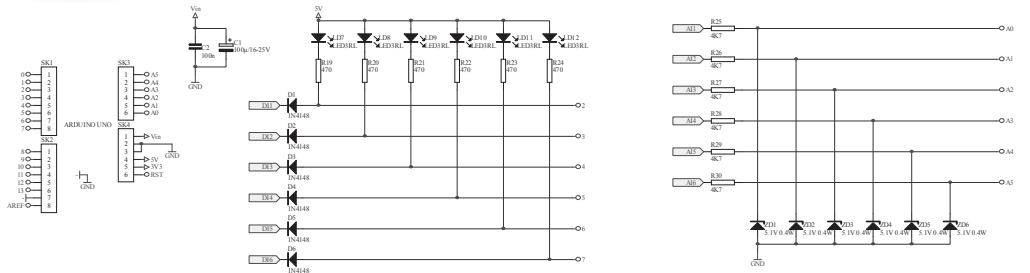
...

**3 INGRESSI ANALOGICI**  
0...5V

6 INGRESSI ANALOGICI



SCARICA LO SKETCH D'ESEMPIO DALLA SCHEDA DEL PRODOTTO VMA05 DISPONIBILE SU [WWW.VELLEMAN.BE](http://WWW.VELLEMAN.BE)





È disponibile il nuovo catalogo  
Velleman Projects. Scarica la tua copia da:  
[www.vellemanprojects.eu](http://www.vellemanprojects.eu)



Soggetto a modifiche senza preavviso. Non siamo responsabili di eventuali  
errori tipografici o di altra natura - © Velleman nv. HVMA05 Velleman NV,  
Legen Heirweg 33 - 9890 Gavere.