

MultiNet Austria Release 00.3

For turn-by-turn navigation and
all your high-end mapping applications

General Country Information

Area (km ²):	83.858
Population:	7.795.786
N° of Municipalities:	2.358
Capital:	Vienna



About MultiNet

MultiNet is an outstanding vector database carrying highly detailed information on the roads of an entire country with details of intersections and junctions plus information on railways and waterways. The Street Network includes house number ranges in many cities and urban areas.

The street and road data provides complete traffic information, including restrictions and blocked passages, indications of toll roads and ferry connections, RDS/TMC information and signposts. MultiNet also has two classifications of the road network, specially tuned for navigation and optimal route calculation.

Administrative areas — ranging from national to local level — are identified, and postal codes are included for many countries. A full categorization of land use indicates the presence of, for example industrial areas, harbors and beaches, woodland and parks, woods, heaths and moors.

Thousands of points of interest (POI) are recorded. These include airports, railway stations, hospitals, garages, petrol stations, hotels, restaurants, post offices, car rental facilities and many more.

MultiNet also contains Update Information on creation, modification and deletion of geographic data, allowing customers to selectively, incrementally or differentially update the digital core map of their application.

Phonetic transcriptions can be obtained optionally. These allow 'Text to Speech' and 'Automatic Speech Recognition' in a variety of applications.

Available countries

Austria, Belgium, Denmark, France & Monaco, Germany, Great-Britain, Italy, Luxembourg, Norway, Portugal, Spain & Andorra, Sweden, Switzerland & Liechtenstein, The Netherlands

New

- ✓ Extension of Points of Interest
- ✓ Addition of house number ranges
- ✓ Signposts along motorways
- ✓ Amelioration of Net 2 classes
- ✓ Normalisation of City Centres
- ✓ Part of Bayern included
- ✓ Contents according to MultiNet version 3.0

Next to the normal field surveys, quality checks and the processing of product defect reports, a number of improvements has been made.

Are you looking for a hotel, restaurant, petrol station...? More than 23.000 points of interest are now available for Austria.

New for Bregenz, Eisenstadt, Innsbruck, Klagenfurt, Salzburg, Sankt Pölten is the addition of house number ranges. They define in what part and on which side of the street your address is located.

Complex traffic situations become much simpler with the signpost information along motorways.

Net 2 classes have been improved significantly and the city centres have been normalised; each order 8 area now has a unique city centre of class 8 or higher.

Part of Bayern (Germany) has been included in this database in order to assure connectivity.

Furthermore a number of features have been enhanced according to the MultiNet Data & Format Specifications, version 3.0

Format / Co-ordinate System

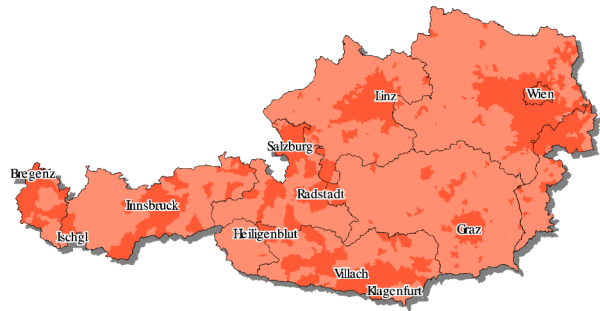
Format: GDF-AS (ASCII-Sequential) and GDF-AR (ASCII-Relational)
Co-ordinate System: WGS'84

Contents

- ✓ Roads (Name, Alternate Name, Back Road, Blocked Passage, Composite Form of Way, Direction of Traffic Flow, House Number Ranges, Form of Way, Freeway, Functional Road Class, Net 1&2 Class, Opening Period, Plural Junction, Positional Accuracy, Restricted Time Validity, Road Condition, Road Display Class, Road Geometry Completeness, Route Number, Side of Line, Slip Road Type, Special Restrictions, Street Code, Stubble, Processing Status, Toll Road, Validity period, Vehicle Type, Z-Level Information)
- ✓ Intersections (Type)
- ✓ Junctions (Type)
- ✓ Address Areas (Name)
- ✓ Ferry Connections (Alternate Name, Direction of Traffic Flow, Type, Functional Road Class, Net 1&2 Class, Opening Period, Road Display Class, Vehicle Type)
- ✓ Administrative Areas (Centre Point of Feature, Boundary Element, Boundary Element Junction)
 - ✓ Country (ISO Code, Name)
 - ✓ 'Bundesland' (Official Code & Name)
 - ✓ 'Bezirk' (Official Code & Name)
 - ✓ Municipality (Network Type, Official Code & Name, Population, Population Class,
 - ✓ 'Stadtteil' (Official Code & Name)
- ✓ Settlements and Named Areas (Name)
- ✓ Brunnels (Type, Name)
- ✓ Railways (Railway Edge, Element & Element Junction, Railway Node)
- ✓ Land Cover and Land Use (Name, Type)
 - ✓ Woodland
 - ✓ Park/Garden
 - ✓ Island
 - ✓ Beach/Dune/Sand Area
 - ✓ Industrial Area
 - ✓ Moor/Heath
- ✓ Waterways (Name, Display Class)
- ✓ Points of Interest (Entry Point, Name, Brand Name, Telephone & Fax Number)
 - ✓ Airline Access
 - ✓ Airport
 - ✓ Car Dealer
 - ✓ City Centre
 - ✓ Company
 - ✓ Entertainment
 - ✓ Ferry Terminal
 - ✓ Frontier Crossing
 - ✓ Golf Course
 - ✓ Government Office
 - ✓ Hospital/Polyclinic
 - ✓ Hotel or Motel
 - ✓ Mountain Pass
 - ✓ Open Parking Area
 - ✓ Parking Garage
 - ✓ Petrol Station
 - ✓ Post Office
 - ✓ Railway Station
 - ✓ Rent-a-Car Facility
 - ✓ Rent-a-Car Parking
 - ✓ Rest Area
 - ✓ Restaurant
 - ✓ Shopping Centre
 - ✓ Stadium
- ✓ Relationships (e.g. Road Element in Administrative Area, Service in Administrative Area, Road Element in Built-up Area, etc.)

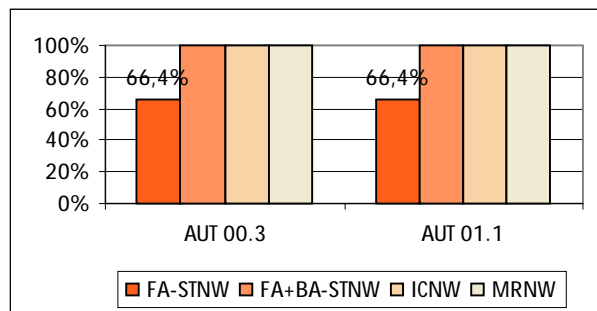
⚠ Please note that the contents can differ from region to region

Coverage



	N° of Mun.	% of Pop.
Street Network Fully Attributed	738	66,4%
Street Network Basic Attributed	2.358	100,0%
House Number Ranges	9	31,1%

Overview of present and future Coverage



Applications

MultiNet can be used in applications such as GIS, on-line mapping and PC applications and in new technologies like WAP and PDA.

It is the ideal base map for advanced turn-by-turn navigation applications and sophisticated traffic management and telematics applications.

Why?

- ✓ MultiNet contains features like RDS/TMC location codes, relationships, phonetic transcriptions* and signposts specially tuned for navigation applications. On top, additional network classifications enable optimal route calculation.
- ✓ The format GDF (CEN: international standard) allows for possible content extensions to meet future technology requirements
- ✓ The product is being updated twice a year.
- ✓ A MultiNet product "Major Roads of Europe" connecting most cities of Europe, is available and can be combined with the detailed country products.

* currently only toponyms for Germany are available.