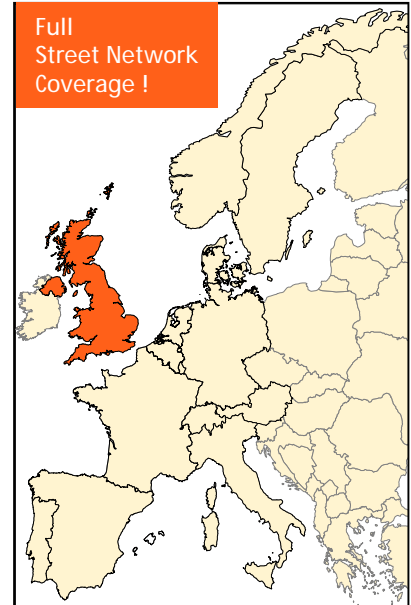


# MultiNet Great-Britain Release 00.1

For turn-by-turn navigation and  
all your high-end mapping applications

#### General Country Information

Area (km <sup>2</sup> ):	242.910
Population:	57.809.100
N° of Districts:	338
Capital:	London



## About MultiNet

MultiNet is an outstanding vector database carrying highly detailed information on the roads of an entire country with details of intersections and junctions plus information on railways and waterways. The Street Network includes house number ranges in many cities and urban areas.

The street and road data provides complete traffic information, including restrictions and blocked passages, indications of toll roads and ferry connections, RDS/TMC information and signposts. MultiNet also has two classifications of the road network, specially tuned for navigation and optimal route calculation.

Administrative areas — ranging from national to local level — are identified, and postal codes are included for many countries. A full categorization of land use indicates the presence of, for example industrial areas, harbors and beaches, woodland and parks, woods, heaths and moors.

Thousands of points of interest (POI) are recorded. These include airports, railway stations, hospitals, garages, petrol stations, hotels, restaurants, post offices, car rental facilities and many more.

MultiNet also contains Update Information on creation, modification and deletion of geographic data, allowing customers to selectively, incrementally or differentially update the digital core map of their application.

Phonetic transcriptions can be obtained optionally. These allow 'Text to Speech' and 'Automatic Speech Recognition' in a variety of applications.

## New

- ✓ Extension of Points of Interest
- ✓ Normalisation of Functional Road Classes
- ✓ Creation of Net 2 classes
- ✓ Contents according to MultiNet version 3.0

Apart from the normal field surveys, quality checks and the processing of product defect reports, a number of improvements have been made.

Are you looking for a hotel, restaurant, petrol station...? About 65.000 points of interest are now available for Great-Britain.

Navigation and route calculation will be improved by the normalisation of functional road classes and the addition of Net 2 classes for the entire road network.

Furthermore a number of features have been enhanced according to the MultiNet Data & Format Specifications, version 3.0

## Format / Co-ordinate System

Format: GDF-AS (ASCII-Sequential) and GDF-AR (ASCII-Relational)  
Co-ordinate System: WGS'84

## Available countries

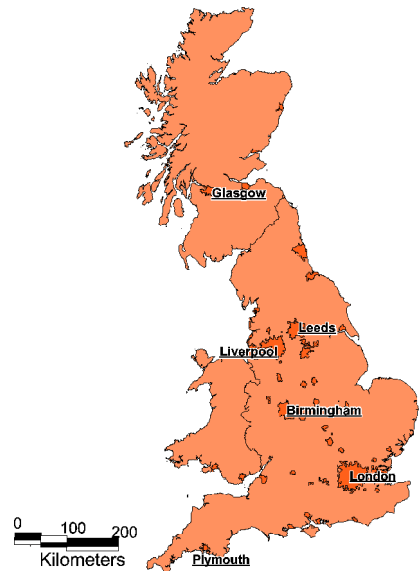
Austria, Belgium, Denmark, France & Monaco, Germany, Great-Britain, Italy, Luxembourg, Norway, Portugal, Spain & Andorra, Sweden, Switzerland & Liechtenstein, The Netherlands

## Contents

- ✓ Roads (Name, Alternate Name, Blocked Passage, Composite Form of Way, Direction of Traffic Flow, Form of Way, Freeway, Functional Road Class, Net Classes, Plural Junction, Positional Accuracy, Restricted Time Validity, Road Condition, Road Display Class, Route Number, Side of Line, Slip Road Type, Special Restrictions, Stubble, Processing Status, Toll Road, Vehicle Type)
- ✓ Intersections (Name, Type)
- ✓ Junctions (Type)
- ✓ Ferry Connections (Alternate Name, Direction of Traffic Flow, Type, Functional Road Class, Road Display Class, Route Number, Vehicle Type)
- ✓ Administrative Areas (Centre Point of Feature, Boundary Element, Boundary Element Junction)
  - ✓ Country (ISO Code, Name)
  - ✓ Region (Official Code & Name)
  - ✓ County (Official Code & Name)
  - ✓ District (Network Type, Official Code & Name, Population, Population Class)
  - ✓ 'Civil Parish, Community' (Official Code & Name)
- ✓ Settlements and Named Areas
- ✓ Brunnels (Type, Name)
- ✓ Railways (Railway Element & Element Junction)
- ✓ Land Cover and Land Use (Name, Type)
  - ✓ Park/Garden
- ✓ Waterways (Name, Display Class)
- ✓ Points of Interest (Name, Brand Name, Telephone & Fax Number)
  - ✓ Airport
  - ✓ City Centre
  - ✓ Ferry Terminal
  - ✓ Frontier Crossing
  - ✓ Golf Course
  - ✓ Government Office
  - ✓ Hospital/Polyclinic
  - ✓ Hotel or Motel
  - ✓ Important Tourist Attraction
  - ✓ Open Parking Area
  - ✓ Parking Garage
  - ✓ Petrol Station
  - ✓ Place of Worship
  - ✓ Post Office
  - ✓ Railway Station
  - ✓ Rent-a-Car Facility
  - ✓ Rest Area
  - ✓ Restaurant
  - ✓ Shopping Centre
  - ✓ Stadium
  - ✓ Tourist Information Office
- ✓ Relationships (e.g. Road Element in Administrative Area, Service in Administrative Area, Road Element in Built-up Area, Signpost etc.)

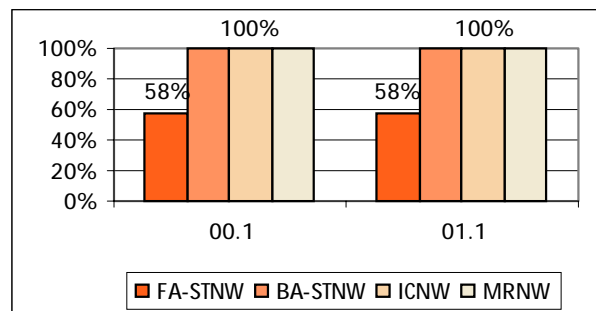
‡ Please note that the contents can differ from region to region

## Coverage



	% of Pop.
Street Network Fully Attributed	58%
Street Network Basic Attributed	100%
House Number Ranges	N/A

## Overview of present and future Coverage



## Applications

MultiNet can be used in applications such as GIS, on-line mapping and PC applications and in new technologies like WAP and PDA.

It is the ideal base map for advanced turn-by-turn navigation applications and sophisticated traffic management and telematics applications.

### Why?

- ✓ MultiNet contains features like RDS/TMC location codes, relationships, phonetic transcriptions\* and signposts specially tuned for navigation applications. On top, additional network classifications enable optimal route calculation.
- ✓ The format GDF (CEN: international standard) allows for possible content extensions to meet future technology requirements
- ✓ The product is being updated twice a year.
- ✓ A MultiNet product "Major Roads of Europe" connecting most cities of Europe, is available and can be combined with the detailed country products.

\* currently only toponyms for Germany are available.