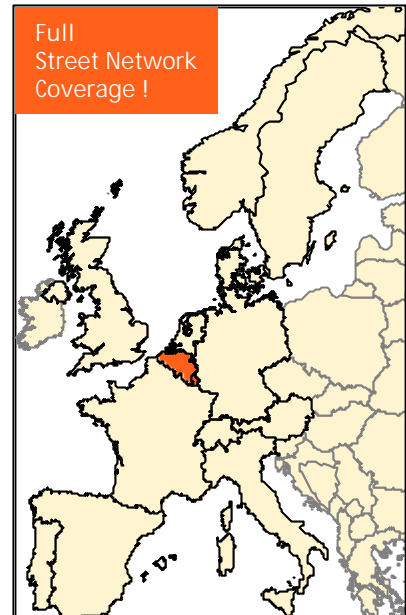


MultiNet Belgium/Luxembourg Release 00.5

For turn-by-turn navigation and
all your high-end mapping applications



General Country Information Luxembourg	
Area (km ²):	2.587
Population:	384.062
N° of Municipalities:	118
Capitals:	Luxembourg

General Country Information Belgium	
Area (km ²):	30.545
Population:	10.204.249
N° of Municipalities:	589
Capitals:	Brussels

About MultiNet

MultiNet is an outstanding vector database carrying highly detailed information on the roads of an entire country with details of intersections and junctions plus information on railways and waterways. The Street Network includes house number ranges in many cities and urban areas.

The street and road data provides complete traffic information, including restrictions and blocked passages, indications of toll roads and ferry connections, RDS/TMC information and signposts. MultiNet also has two classifications of the road network, specially tuned for navigation and optimal route calculation.

Administrative areas — ranging from national to local level — are identified, and postal codes are included for many countries. A full categorization of land use indicates the presence of, for example industrial areas, harbors and beaches, woodland and parks, woods, heaths and moors.

Thousands of points of interest (POI) are recorded. These include airports, railway stations, hospitals, garages, petrol stations, hotels, restaurants, post offices, car rental facilities and many more.

MultiNet also contains Update Information on creation, modification and deletion of geographic data, allowing customers to selectively, incrementally or differentially update the digital core map of their application.

Phonetic transcriptions can be obtained optionally. These allow 'Text to Speech' and 'Automatic Speech Recognition' in a variety of applications.

Available countries

Austria, Belgium, Denmark, France & Monaco, Germany, Great-Britain, Italy, Luxembourg, Norway, Portugal, Spain & Andorra, Sweden, Switzerland & Liechtenstein, The Netherlands

New

- ✓ Increase of Points of Interest + Importance attribute
- ✓ All Built-up Areas are normalised and completely attributed with their official name
- ✓ RDS/TMC path information is now complete for the whole of Belgium
- ✓ Country and municipality borders are included
- ✓ Sea polygon for Belgium and the Netherlands

Apart from the normal field surveys, quality checks and the processing of product defect reports, a number of improvements have been made.

An increase of POI has brought the total up to 12 882. The new 'importance attribute' allows you to directly select a POI of national importance.

The official names of all Built-up Areas have been completed and the Built-up Areas have all been normalised; the smaller BUA were deleted and adjacent BUA globalised.

Avoid traffic jams with RDS/TMC path information, now available for the whole of Belgium and delivered as an attribute of a road element.

The addition of the Belgian and Dutch sea polygon and the inclusion of country and municipality borders will surely add to a better visualisation of your map.

Format / Co-ordinate System

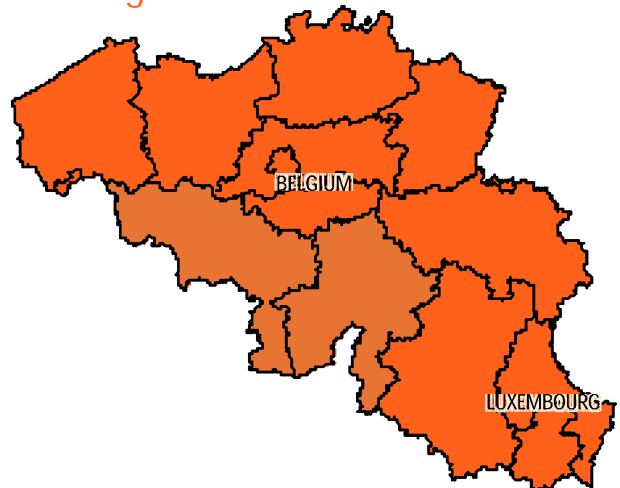
Format: GDF-AS (ASCII-Sequential) and GDF-AR (ASCII-Relational)
Co-ordinate System: WGS'84

Contents

- ✓ Roads (Name, Alternate Name, Blocked Passage, Composite Form of Way, Direction of Traffic Flow, House Number Ranges, Form of Way, Freeway, Functional Road Class, Net Classes, Plural Junction, Positional Accuracy, Restricted Time Validity, Road Condition, Road Display Class, Road Geometry Completeness, Route Number, Side of Line, Slip Road Type, Special Restrictions, Stubble, Street Code, RDS/TMC path information, Processing Status, Toll Road, Vehicle Type, Z-Level Information)
- ✓ Intersections (Name, Type)
- ✓ Junctions (Type)
- ✓ Address Areas (Name)
- ✓ Ferry Connections (Alternate Name, Direction of Traffic Flow, Type, Functional Road Class, Net 1&2 Class, Road Display Class)
- ✓ Administrative Areas (Centre Point of Feature, Boundary Element, Boundary Element Junction)
 - ✓ Country (ISO Code, Name)
 - ✓ Region (Official Code & Name)
 - ✓ Province (Official Code & Name)
 - ✓ District (Official Code & Name)
 - ✓ Municipality (Network Type, Official Code & Name, Population, Population Class)
 - ✓ Sub-municipality (Official Code & Name)
- ✓ Settlements and Named Areas (Name, Postal Code)
- ✓ Brunnels (Type, Name)
- ✓ Railways (Railway Edge, Element & Element Junction, Railway Node)
- ✓ Land Cover and Land Use (Name, Type)
 - ✓ Woodland
 - ✓ Park/Garden
 - ✓ Island
 - ✓ Beach/Dune/Sand Area
 - ✓ Industrial Area
 - ✓ Industrial Harbour Area
 - ✓ Company Ground
 - ✓ Moor/Heath
- ✓ Waterways (Name, Display Class)
- ✓ Points of Interest (Entry Point, Name, Brand Name, Telephone & Fax Number)
 - ✓ Airline Access
 - ✓ Airport
 - ✓ Car Dealer
 - ✓ City Centre
 - ✓ Company
 - ✓ Exhibition Centre
 - ✓ Ferry Terminal
 - ✓ Frontier Crossing
 - ✓ Government Office
 - ✓ Hospital/Polyclinic
 - ✓ Hotel or Motel
 - ✓ Open Parking Area
 - ✓ Parking Garage
 - ✓ Petrol Station
 - ✓ Post Office
 - ✓ Railway Station
 - ✓ Rent-a-Car Facility
 - ✓ Rest Area
 - ✓ Restaurant
 - ✓ Shopping Centre
 - ✓ Stadium
 - ✓ Theatre
- ✓ Relationships (e.g. Road Element in Administrative Area, Service in Administrative Area, Road Element in Built-up Area, Signpost etc.)

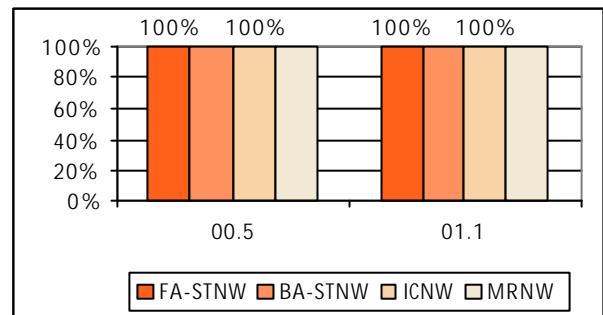
‡ Please note that the contents can differ from region to region

Coverage



	# of Mun.	% of Pop.
Street Network Fully Attributed (Bel)	589	100%
Street Network Fully Attributed (Lux)	118	100%
House Number Ranges	589	100%

Overview of present and future Coverage



Applications

MultiNet can be used in applications such as GIS, on-line mapping and PC applications and in new technologies like WAP and PDA.

It is the ideal base map for advanced turn-by-turn navigation applications and sophisticated traffic management and telematics applications.

Why?

- ✓ MultiNet contains features like RDS/TMC location codes, relationships, phonetic transcriptions* and signposts specially tuned for navigation applications. On top, additional network classifications enable optimal route calculation.
- ✓ The format GDF (CEN: international standard) allows for possible content extensions to meet future technology requirements
- ✓ The product is being updated twice a year.
- ✓ A MultiNet product "Major Roads of Europe" connecting most cities of Europe, is available and can be combined with the detailed country products.

* currently only toponyms for Germany are available.