

MultiNet Switzerland & Liechtenstein Release 00.4

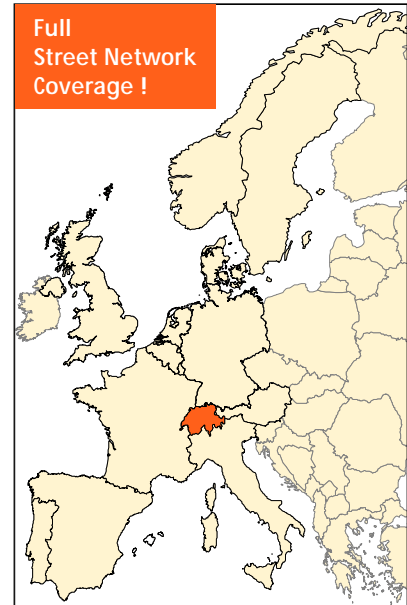
For turn-by-turn navigation and
all your high-end mapping applications

General Country Information Switzerland

Area (km²): 40.193
Population: 6.870.315
N° of Municipalities: 2.904
Capital: Bern

General Country Information

Area (km²): 160
Population: 31.320
N° of Municipalities: 11
Capital: Vaduz



About MultiNet

MultiNet is an outstanding vector database carrying highly detailed information on the roads of an entire country with details of intersections and junctions plus information on railways and waterways. The Street Network includes house number ranges in many cities and urban areas.

The street and road data provides complete traffic information, including restrictions and blocked passages, indications of toll roads and ferry connections, RDS/TMC information and signposts. MultiNet also has two classifications of the road network, specially tuned for navigation and optimal route calculation.

Administrative areas — ranging from national to local level — are identified, and postal codes are included for many countries. A full categorization of land use indicates the presence of, for example industrial areas, harbors and beaches, woodland and parks, woods, heaths and moors.

Thousands of points of interest (POI) are recorded. These include airports, railway stations, hospitals, garages, petrol stations, hotels, restaurants, post offices, car rental facilities and many more.

MultiNet also contains Update Information on creation, modification and deletion of geographic data, allowing customers to selectively, incrementally or differentially update the digital core map of their application.

Phonetic transcriptions can be obtained optionally. These allow 'Text to Speech' and 'Automatic Speech Recognition' in a variety of applications.

New

- ✓ Normalisation of City Centres
- ✓ Extension of Points of Interest
- ✓ Addition of house number ranges
- ✓ RDS/TMC path information
- ✓ Frontier crossings included

Apart from the normal field surveys, quality checks and the processing of product defect reports, the following improvements have been made.

The city centres have been normalised; each order 8 area has a unique city centre of class 8 or higher.

Are you looking for a hotel, restaurant, petrol station...? More than 18.000 points of interest are available for Switzerland.

New for Basel, Luzern, Biel, Thun and Lausanne is the addition of house number ranges. They define in what part and on which side of the street your address is located.

Avoid traffic jams with RDS/TMC path information, included for the whole country and delivered as an attribute of a road element.

The frontier crossings are now completely included.

Format / Co-ordinate System

Format: GDF-AS (ASCII-Sequential) and GDF-AR (ASCII-Relational)
Co-ordinate System: WGS'84

Available countries

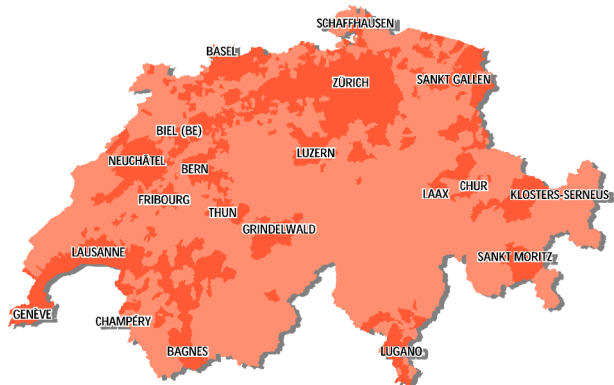
Austria, Belgium, Denmark, France & Monaco, Germany, Great-Britain, Italy, Luxembourg, Norway, Portugal, Singapore, Spain & Andorra, Sweden, Switzerland & Liechtenstein, The Netherlands

Contents

- ✓ Roads (Name, Alternate Name, Blocked Passage, Composite Form of Way, Direction of Traffic Flow, House Number Ranges, Form of Way, Freeway, Functional Road Class, Net Classes, Opening Period, Plural Junction, Positional Accuracy, RDS/TMC Path information, Restricted Time Validity, Road Condition, Road Display Class, Road Geometry Completeness, Route Number, Side of Line, Slip Road Type, Special Restrictions, Stubble, Processing Status, Toll Road, Validity Period, Vehicle Type, Z-Level Information)
- ✓ Intersections (Name, Type)
- ✓ Junctions (Type)
- ✓ Address Areas (Name)
- ✓ Ferry Connections (Direction of Traffic Flow, Type, Functional Road Class, Net Classes, Road Display Class, RDS/TMC Path information)
- ✓ Administrative Areas (Centre Point of Feature, Boundary Element, Boundary Element Junction)
 - ✓ Country (ISO Code, Name)
 - ✓ Federal State (Official Code & Name)
 - ✓ District (Official Code & Name)
 - ✓ Municipality (Network Type, Official Code & Name, Population, Population Class)
- ✓ Settlements and Named Areas (Name)
- ✓ Brunnels (Type, Name)
- ✓ Railways (Railway Edge, Element & Element Junction, Railway Node)
- ✓ Land Cover and Land Use (Name, Type)
 - ✓ Woodland
 - ✓ Park/Garden
 - ✓ Island
 - ✓ Industrial Area
 - ✓ Moor/Heath
- ✓ Waterways (Name, Display Class)
- ✓ Points of Interest (Entry Point, Name, Brand Name, Telephone & Fax Number)
 - ✓ Airline Access
 - ✓ Open Parking Area
 - ✓ Airport
 - ✓ Parking Garage
 - ✓ Car Dealer
 - ✓ Petrol Station
 - ✓ City Centre
 - ✓ Police Station
 - ✓ Company
 - ✓ Post Office
 - ✓ Embassy
 - ✓ Railway Station
 - ✓ Entertainment
 - ✓ Rent-a-Car Facility
 - ✓ Ferry Terminal
 - ✓ Rent-a-Car Parking
 - ✓ Frontier Crossing
 - ✓ Rest Area
 - ✓ Government Office
 - ✓ Restaurant
 - ✓ Hospital/Polyclinic
 - ✓ Shopping Centre
 - ✓ Hotel or Motel
 - ✓ Sports Centre
 - ✓ Mountain Pass
 - ✓ Stadium
- ✓ Relationships (e.g. Road Element in Administrative Area, Service in Administrative Area, Road Element in Built-up Area, etc.)

⚠ Please note that the contents can differ from region to region

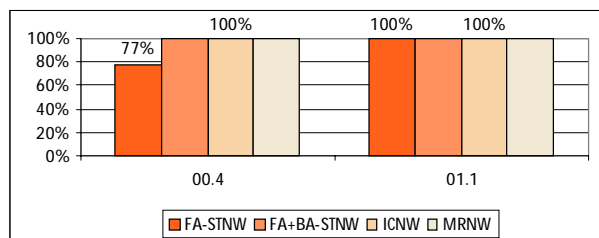
Coverage



	# of Mun.	% of Pop.
Street Network Fully Attributed	1.126	77%
Street Network Basic Attributed	2.915	100%
House Number Ranges	10	19%

House number ranges for Zürich, Genève, Bern, Sankt Gallen, Winterthur, Basel, Luzern, Biel, Thun, Lausanne

Overview of present and future Coverage



Applications

MultiNet can be used in applications such as GIS, on-line mapping and PC applications and in new technologies like WAP and PDA.

It is the ideal base map for advanced turn-by-turn navigation applications and sophisticated traffic management and telematics applications.

Why?

- ✓ MultiNet contains features like RDS/TMC location codes, relationships, phonetic transcriptions* and signposts specially tuned for navigation applications. On top, additional network classifications enable optimal route calculation.
- ✓ The format GDF (CEN: international standard) allows for possible content extensions to meet future technology requirements
- ✓ The product is being updated twice a year.
- ✓ A MultiNet product "Major Roads of Europe" connecting most cities of Europe, is available and can be combined with the detailed country products.

* currently only available for Germany, France and Italy.